

**Experience  
English** 

**English Language  
Courses for Adults and  
Young Learners**





## Life changing learning

We believe **language learning** goes way beyond the classroom and we are **dedicated to immersion** in the **culture** and **environment** behind the language, as well as teaching it.



# Welcome to Experience English



## Contents

About Us ..... 5

**Adult Courses**

Your Life Changing Journey..... 6

Our Courses..... 8

Hampstead School of English ..... 10

Manchester Academy of English ..... 16

English Language Centre York..... 22

Edinburgh Language Centre ..... 28

## Young Learner Courses

Introduction ..... 35

Why Experience English?..... 36

King's College, London Bridge ..... 38

Hampstead School of English ..... 39

Reed's School, Cobham..... 40

Bournemouth College ..... 41

English Language Centre York ..... 42

Manchester Academy of English ..... 43

Edinburgh Language Centre ..... 44

Edinburgh Live..... 45

Edinburgh College  
(Telford Campus)..... 46

Nottingham University  
(Sutton Bonington Campus)..... 47

Young Learners: Year Round..... 48

Terms and Conditions..... 50



**Experience English** is a collection of high-quality schools in four of the **UK's most outstanding locations**. We believe in offering a style of language learning that extends far beyond the classroom and immerses you in the history, culture and life of each destination. We believe that learning English in the UK will open up your world through a **life changing experience**.

## Our locations

Our schools and Young Learner centres are located in some of the most renowned and exceptional cities of England and Scotland which play a crucial role in making your time with us unforgettable. We immerse you in the UK's rich heritage through carefully designed academic and social programmes and excursions.

## Our way of learning

Our schools aim to provide you with the highest levels of academic excellence and our accreditations are testament to that. In addition to excellent facilities, our academic teams have the qualifications, dedication and experience to get the best out of you, delivering communicative and student-centred learning. We offer weekly progress testing, tailor-made learning plans, individual tutorials and online support to ensure you excel.

## Cultural immersion

We are dedicated to making your time in the UK exciting, inspiring and rewarding, as well as educational. A varied social programme will provide you with the inspiration to focus and consolidate your learning. This ensures you will be able to make the most of your learning experience outside the classroom. And as our schools are situated in historic areas, you will be immersed in British history and culture from your first day.

## Our team

We not only strive to deliver exceptional academic quality and support, but our team are also passionate about their cities and are always willing to share their local knowledge. Whether it's organising social events and excursions with other students, or helping you plan an itinerary of the sights, our staff are committed to making your stay in the UK as enriching as possible.

## Student support

Our support and expertise is not just limited to your time in class. Contact us or speak to a local agent for advice on your choice of location and course. Our online Student Zone allows you to complete a pre-course test so we can place you in a class that's right for you. When you arrive we will further assess your skills so we can be sure that you are at a level that suits you. After receiving your certificate at the end of your course, we will guide you towards the next step of your English language learning.





# Your Life Changing Journey

Our **support** and **expertise** is not just limited to your time in class; it starts before you even arrive.

## Before you arrive

Before arrival, take a **pre-placement** test to determine your level of English

Once your test is complete, we can provide you with **pre-arrival study exercises** to meet your language needs

Join our online community  

## Your first day

Welcome introduction

Tour of the school

Oral testing and **placement test** to check your most current level of English and place you in the best class for your level

Tour of the local area

## During your stay

Optional personal interviews with the Academic Manager

Regular homework and weekly progress tests

Personal study plan

Access to student support

Book your place on social activities

Make an appointment with a member of staff

Choice to opt-in for regular tutorials

Immersive language clubs

Social activities\*

University advice available from specialist staff

Supportive staff to help with any queries and ensure you have the best experience

Welfare officer to help and assist you throughout your stay



Experience English 



## Your last day

Receive your **Experience English** certificate

Find out the level you've achieved with your **end-of-course report**

## After you leave

Join the **Experience English** alumni groups on LinkedIn for all the latest events, news and English tips!



\*Please note, many social activities are free of charge, however some may incur additional cost



# Our Courses

Whether you'd like to improve your English for your studies, your career, or simply for life experience, we offer a wide range of English language courses to choose from! Here is what you can study at each location:

## General English

### General English

Rapidly improve your general English skills of speaking, listening, reading, and writing. Grow your vocabulary and improve your grammar, pronunciation and fluency. [London, Manchester, York and Edinburgh](#)

### Study Year

All the benefits of General English and more! Studying for 25 weeks or longer, a Study Year will give you a fully immersive British experience. [London, Manchester, York and Edinburgh](#)

### Private Tuition

The fastest way to make progress in English, Private Tuition gives you a highly personalised learning experience as well as the flexibility to choose how many classes you take. It can also be added as a supplement to any course. [London, Manchester, York and Edinburgh](#)



## Combination Courses (including electives)

### General English + Academic English

All the benefits of General English plus tuition in Academic English to help you perform in an academic environment, such as a British University. For example, you will learn how to construct an essay, participate in tutorials and discussions that require critical thinking, and listen and take effective notes in long lectures. [London and York](#)

### General English + Business English

All the benefits of General English plus tuition in Business English to cover the key areas of finance, sales and marketing, human resources, management and more. You will learn how to deliver good presentations, chair effective meetings, and write emails and letters appropriately. [London and Edinburgh](#)

### General English + IELTS

All the benefits of General English plus tuition to prepare for your IELTS exam, required to achieve a qualification that is recognised by universities, educational institutions, employers, and government immigration agencies as proof of your English level. [London, Manchester, York and Edinburgh](#)

### General English + TOEFL

All the benefits of General English plus tuition to prepare you for your TOEFL exam, accepted by more than 9000 universities and colleges as well as employers worldwide as proof of your English level. [London, Manchester](#)

### General English + TOEIC

All the benefits of General English plus tuition to prepare you for your TOEIC English test, recognised as proof of your level of English by over 10,000 companies, government agencies, and English language learning programmes in 120 countries. [London](#)

## University and Career Preparation

### University Preparation

This course consists of General English and Academic English classes combined with IELTS or TOEFL classes as well as Private Tuition. It will help you improve your English for academic life and provide you with exam training for any university application. [London](#)

### Cambridge English: First (FCE)

In this course we will help you to prepare for your FCE examination, a recognised qualification that proves you have the language skills to live and work independently in an English-speaking country or study on courses taught in English. [London, Manchester, York and Edinburgh](#)

### Cambridge English: Advanced (CAE)

In this course we will help you to prepare for your CAE examination. A step higher from FCE, your CAE qualification demonstrates high-level English skills for academic and professional success, and is accepted globally as proof of academic excellence. [London, Manchester, York and Edinburgh](#)

### Cambridge English: Proficiency (CPE)

In this course we will help you to prepare for your CPE examination. Cambridge English's highest-level qualification, passing this exam demonstrates that you have mastered English to an exceptional level, with the fluency of a native speaker. [London and Manchester](#)

## Professional English

### Executive English Courses

This is a highly intensive course for professionals from any industry who would like to improve their English skills to achieve better performance and succeed in a work environment. Tailor-made to suit your specific requirements, the course will cover business and commercial topics relevant to your industry. [Edinburgh](#)

**Private tuition is available for both Executive English and Professional English clients.**



## Special Interest

### English for 50+

This is a General English course for anyone aged 50+. Improve your English language skills in speaking, listening, reading, and writing, and enjoy a fascinating range of cultural visits and excursions. [London, York and Edinburgh](#)

### English at the Edinburgh Festivals

A unique specialist course, English at the Edinburgh Festivals is the perfect study trip for anyone with a passion for comedy, drama, music, or the performing arts. [Edinburgh](#)

### English with Historic Homes and Gardens

This is an immersive English course that combines General English with interesting and historic excursions to heritage locations, learning about British history while improving your communication skills. [York, London](#)

### Language in London

Guided by experienced and knowledgeable teachers, Language in London is an immersive and interactive English language course combining classroom activities with an exciting sightseeing programme. [London](#)

### Teacher Immersion

This course is for teachers whose native language is not English, but who are required to teach in the English language, helping you to develop your communication skills in the classroom. [London, Manchester, York and Edinburgh](#)

### Edinburgh Christmas Programme

This special Christmas programme incorporates English language classes with a festive social programme designed to introduce you to British Christmas traditions and show you the delights of Edinburgh in winter. [Edinburgh](#)

# Experience English

## Professional English

With all the benefits of Executive English, our Professional English courses in London are highly specialised, industry-specific courses designed to help you develop effective communication skills and empower you to succeed in your chosen career. Our Professional English courses include Business Communication, Effective Presentations, Diplomatic, Engineering, Financial, Insurance, Legal, Medical, Oil and Gas, Pharmaceutical. [London](#)

**Can't see your industry? We can also offer bespoke Professional English courses for other industries, please contact [london@experienceenglish.com](mailto:london@experienceenglish.com) for more information.**



## NEW! Your Pathway to University

Whether you are learning English in Edinburgh, London, Manchester or York our new partnership with Edinburgh Napier University and pathway college EIC provides you with exclusive support to help you gain a place at University. EIC at Edinburgh Napier University offers both Undergraduate and Postgraduate students a range of entry options to further study at University in Edinburgh, UK.

Designed for international students who do not have suitable qualifications to enter the University directly, EIC's undergraduate pathways allow you to do your first or second year at EIC, and then progress into either second or third year of your Bachelor's degree at Edinburgh Napier University on successful completion.

Consistently ranked as one of the top modern universities in the UK, Edinburgh Napier University offers industry informed courses combining theory and practice to prepare graduates for success in today's competitive global job market. 95.4% of Edinburgh Napier graduates are in work or further study within six months of leaving (HESA 2013).

**Please contact [edinburgh@experienceenglish.com](mailto:edinburgh@experienceenglish.com) for more information.**



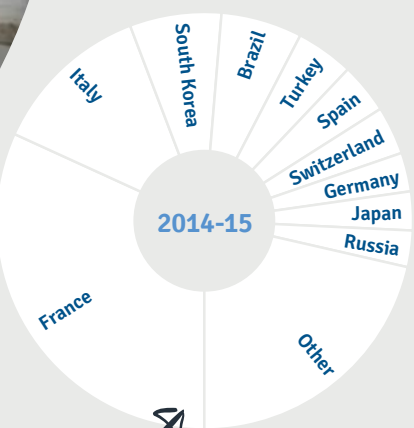
Hampstead School of English is a great place to learn English, with a range of courses and facilities situated in an ideal location. Our students enjoy excellent levels of personal care and attention from committed and dedicated staff.



## Key Facts

- ✓ One of London's premier English language schools, established in 1977
- ✓ Rated 3rd in the Top 10 Best Value Schools in London\*
- ✓ Only 30 minutes from the city centre
- ✓ Located in one of London's most desirable boroughs
- ✓ Intensive and specialist courses
- ✓ Nearby homestay and self-catering accommodation
- ✓ Newly refurbished with great facilities including a cinema, café and two outdoor patios

\*EL Gazette, survey of private-sector schools inspected by both the British Council and ISI, May 2013



**A total of 65 nationalities**

Data based on the number of individual students from 1 May 2014-30 April 2015, excluding closed groups and Young Learner courses

## Our Facilities



### What are the school's facilities?

- Wi-Fi available throughout the school
- Immediate access to London travel network
- Café serving coffee, hot food, sandwiches and pastries
- Two outdoor garden patios
- Library and study centre
- Cinema





# Our Courses

At **Hampstead School of English** we offer a variety of different courses, from General English to professional courses, Cambridge Exam Preparation, special interest options, CELTA and much more. If you are on a course of 20 or more hours, we will do our best to ensure you are taught by at least two different teachers throughout your stay.



In addition we also offer the courses listed below:

- **Study Year courses** (long term General English or Combination)
- **University Preparation** (General English or Combination)
- **Special Interest courses:** Language in London, Teacher Immersion, English for 50+ and English with Historic Homes and Gardens
- **Private tuition**
- **CELTA** teacher-training course

Some courses have minimum student numbers, and level requirements from B1 Intermediate upwards. Please contact us for details.

## General English

🕒 **15, 20 or 25 hours per week**

Ideal if you want to improve your general English skills, including pronunciation, vocabulary, grammar, speaking, listening, reading, writing and fluency

## Combination Courses

🕒 **15 hours of General English per week plus 5 or 10 hours per week of:**

- **Academic English:** to develop skills for studying at an English-speaking university
- **IELTS:** to gain a qualification that is recognised by over 9,000 organisations worldwide, enabling you to study or work where English is the main language of communication
- **Business English:** to help prepare you for studying a business course or working in a professional business environment
- **TOEIC:** to gain a qualification that is recognised by over 10,000 companies and government agencies worldwide, helping you to follow a career in English-speaking companies
- **TOEFL:** to gain a qualification that is recognised by over 9,000 universities and colleges in over 130 countries, for global professional development in English-speaking environments

## Cambridge Examination Preparation

FCE (First), CAE (Advanced), CPE (Proficiency)

We are an official Cambridge English Exam Centre

🕒 **15, 20 or 25 hours per week (15 hours of Cambridge Exam Preparation plus 10 or 15 hours of General English)**

Great if you want to gain a high quality English language qualification accepted globally as proof of your English language skills by more than 3,000 educational institutions, businesses and governments

## Professional Courses

🕒 **15 hours per week**

Extremely valuable if you want to learn how to communicate effectively in English in a specific industry. Choose from Business Communications, Diplomatic, Effective Presentations, Engineering, Financial, Insurance, Legal, Medical, Oil and Gas or Pharmaceutical English.

**Can't see your profession?** Ask us and we'll let you know if we can provide it.

# Accommodation

# Experience English



At **Hampstead School of English** we offer two types of accommodation:

### Homestay

Immerse yourself in London life with a local homestay host\*

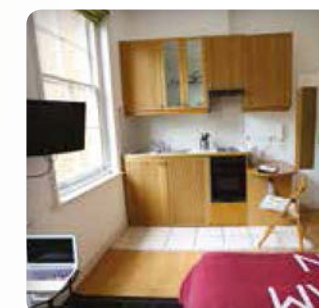
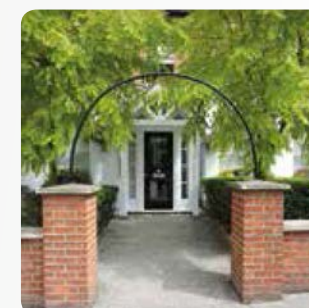
- Up to 45 minutes from the school
- Facilities include shared or private bathroom, access to a study desk, living room and TV
- Meals provided on a bed-and-breakfast or half board basis
- Internet access is available in some homestay accommodation

\*The majority of homestays are arranged internally; external agents are used very occasionally at our discretion.

### Studios

Stay in your own single en-suite studio apartment for complete independence

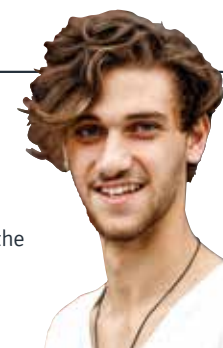
- 5 minutes from the school on foot
- Facilities include a private or shared kitchen (self-catering), en-suite bathroom, bed, shared washing machine facilities, TV and Internet access, a communal garden and CCTV entrance



## Testimonial

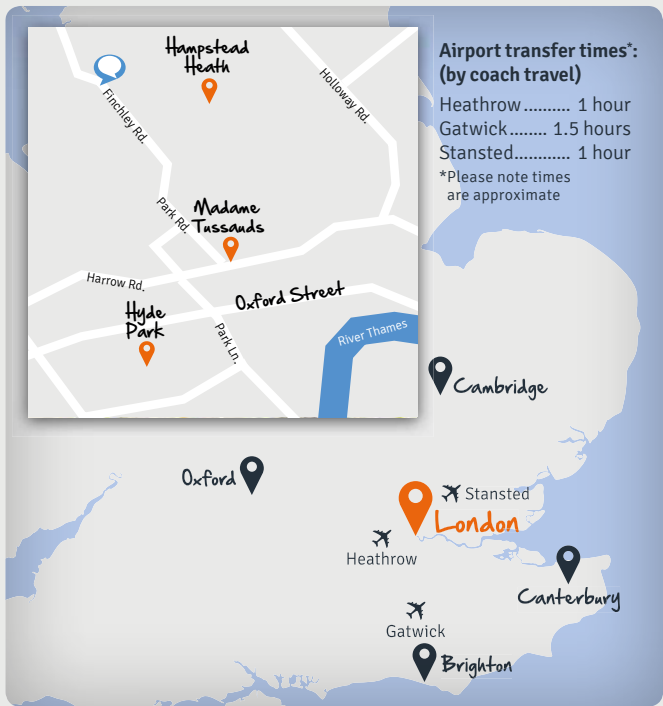
### Giacomo, Italy

Really good organisation of the school programmes, in and out of the school. Excellent teachers, and the structure of the school is perfect. Really helpful.





# Your London Experience



Hampstead School of English organises an exciting and varied social programme giving you the chance to socialise and discover London outside of academic studies.

## Typical First Day

To give you a better idea of what to expect, here is an example of what your first day could look like.\*

7.30 – 9.00	Arrival, welcome to the school and placement test in writing and speaking
9.00 – 10.45	School induction, team welcome, tour of the school and meet your fellow students
10.45 – 11.00	Break (why not get a coffee from the café downstairs?)
11.00 – 12.30	Lesson: Start working on the theme of the week and real-life language skills
12.30 – 13.30	Lunch
After School	Take part in free a workshop or a tour of the local area

- Pronunciation workshop (Tues 16.45)
- English in the Workplace (Wed 16.45)
- Theatre Thursdays (Thurs 19.00)
- Pub Night (Tues 19.30)

## Testimonial

**Diana, Saudi Arabia**

My English has improved since I started here, the teachers are very helpful and friendly and the school is very organised.

## Social Activities

- Pub Night\*\*
- Guided walks of Greenwich and the iconic Southbank
- London's top gallery and museum tours
- Cultural Camden
- Academic workshops
- West End and Shakespeare Globe theatre trips
- Information on London's best club nights
- Organised sports events (e.g. table tennis, basketball, rock climbing)

\*Please note class times are subject to change depending on your chosen course; activities vary and some may incur an additional charge, if you wish to take part in every social activity you should allow a budget of approximately £40-60 per week.

\*\*For over 18s only.



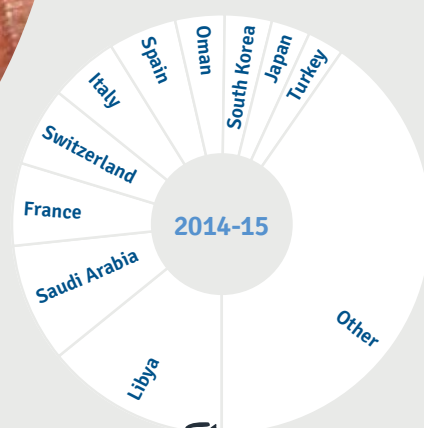
Located in the centre of one of the UK's most cosmopolitan cities, **Manchester Academy of English** is the perfect place to study English whilst experiencing life in a lively and exciting British location.

The so-called 'Capital of the North' boasts a great sports scene and was recently voted 'Best Sporting City in the UK' by ESPN. It is also home to BBC and ITV's 'Media City UK' and has a large music scene.

## Key Facts

- ✓ Established in 1991, it is the longest-established private English language school in the city
- ✓ Located in a beautiful Victorian building, in the centre of the city
- ✓ Renowned as a centre of excellence in teacher training
- ✓ The only Eqauals-accredited school in Manchester
- ✓ Free academic clubs, such as Conversation Club, International Food Club and much more!
- ✓ Best CELTA Training Centre in UK, 2013\*

\*Awarded by Cambridge English Language Assessment at the Centenary Conference, April 2013.



**A total of 68 nationalities**

Data based on the number of individual students from 1st May 2014-30 April 2015, excluding closed groups and Young Learner courses

## Our Facilities



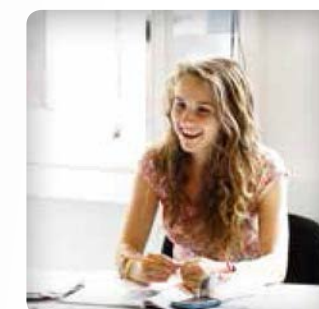
### What are the school's facilities?

- Large student lounge with table football, Xbox and plasma screen TV
- Coffee and vending machines
- Wi-Fi available in specific areas
- Computer and resource room
- Interactive projectors in several classrooms



### Key Figures

- ✓ Classrooms: 22
- ✓ Maximum class size: 12
- ✓ Minimum age: 16






# Our Courses

At **Manchester Academy of English** we offer a variety of different courses, from General English to IELTS preparation, Cambridge Exam Preparation, CELTA, Delta and more. If you are on a course of 20 hours or more, we will do our best to ensure you are taught by at least two different teachers throughout your stay.




## General English

 **15, 20, 21 or 25 hours per week (starts every Monday)**

Ideal if you want to improve your general English skills, including pronunciation, vocabulary, grammar, speaking, listening, reading, writing and fluency

## Combination Courses

 **15 hours of General English per week plus 5 or 10 hours per week of:\* (starts every Monday)**


• **IELTS:** to gain a qualification that is recognised by over 9,000 organisations worldwide, enabling you to study or work where English is the main language of communication

• **TOEFL:** to gain a qualification that is recognised by over 9,000 universities and colleges in over 130 countries, for global professional development in English-speaking environments

\*TOEFL only available as 20-hour course


## Cambridge Examination Preparation

FCE (First), CAE (Advanced), CPE (Proficiency)

 **15, 20 or 25 hours per week (15 hours of Cambridge Exam Preparation plus 10 or 15 hours of General English) (Specific start dates. Minimum level required B1)**

Great if you want to gain a valuable English language qualification accepted globally as proof of your English language skills by more than 3,000 educational institutions, businesses and governments.

## Experience English Life Course

 **15 hours of General English per week plus 5 hours per week of culture**

Experience Manchester and British culture at its best! The course takes places both inside and outside the classroom. Please contact [manchester@experienceenglish.com](mailto:manchester@experienceenglish.com) for details.



In addition we also offer the courses listed below:

- **Study Year courses** (long term General English or Combination)
- **Special Interest courses:** Teacher Immersion
- **Private tuition**
- **CELTA** teacher-training course and **Delta** course

Some courses have minimum student numbers, and level requirements from B1 Intermediate upwards. Please contact us for details.

# Accommodation

# Experience English



At **Manchester Academy of English** we offer three types of accommodation:

### Homestay

Immerse yourself in Mancunian life with a local homestay host

- Up to 45 minutes from the school by bus
- Facilities include shared or private bathroom, study desk, washing machine, living room and TV
- Meals provided on a half board or full board basis
- Internet access is available in most homestay accommodation

### Student Residence

Live in a university flat with five other students whilst enjoying your own independence

- 10 minutes from the school on foot
- Facilities include en-suite bedroom, study desk, access to washing machines, living room, kitchen (self-catering), Internet access and TV

### Student House

Live in a shared house with fellow students for independence and a real international experience

- 15 minutes from the school by bus
- Facilities include shared or en-suite bedrooms, study desk, access to washing machines, kitchen (self-catering), common room, Internet access and large flat screen TV



## Testimonial

**Loïc, France**

What I've enjoyed most about my experience is the sharing of different cultures.







**Airport transfer times\*:**  
(by coach travel)

Manchester ..0.5 hours  
Liverpool..... 1 hour  
East Midlands ..2 hours  
Birmingham..... 2 hours

\*Please note times are approximate

Blackpool

Manchester

Liverpool

Alton Towers

East Midlands

Birmingham

National Football Museum

Printworks

Northern Quarter

Museum of Science and Industry

City Art Gallery

Deansgate Locks

China Town

Manucian Way



Manchester Academy of English organises an exciting and varied social programme giving you the chance to socialise and discover Manchester outside of academic studies.

Typical First Day

To give you a better idea of what to expect, here is an example of what your first day could look like.\*

08.45 - 09.15	Meet and Greet in student lounge with tea and coffee
09.15 - 10.45	Induction, health and safety presentation, and a tour of the school
10.45 - 11.15	Break
11.15 - 12.25	Testing in the student lounge
12.25 - 13.30	Lunch
13.30 - 14.45	Pronunciation workshop, and timetables and classes issued
14.45 - 16.30	Interactive tour of Manchester
16.30 - 17.30	Conversation club in a café or bar (open to all students)

Pub night  
(Wed 19.30)

FIFA tournament  
(Wed 13.45)

Conversation Club  
(Thurs 13.45)

\*Please note class times are subject to change depending on your chosen course; activities vary and some may incur an additional charge, if you wish to take part in every social activity you should allow a budget of approximately £10-50 per week.

Testimonial

Naurio, Angola

I have had such a great time here. The city is spectacular with plenty of things to do and see. The school has an incredible atmosphere, with lovely, motivating and caring teachers, fantastic students from all over the world (I've made many good friends) and astonishing trips through the UK.



Social Activities

- Indoor skiing at Chill Factore
- Manchester City Stadium tour
- Museum of Science and Industry
- Cultural museums and galleries
- Velodrome indoor Olympic cycling track
- Theatre trips
- Football matches
- Salford Quays
- Media City UK



Situated in a beautiful Georgian building in the heart of York, **English Language Centre York** is a great place to study English whilst immersing yourself in one of England's most charming and atmospheric cities.

## Key Facts

- ✓ Established in 1997
- ✓ Located in the centre of picturesque York
- ✓ A highly-accredited centre with over 17 years' experience
- ✓ Lovely facilities, including two outdoor courtyards
- ✓ A superb range of English courses and a CELTA training centre
- ✓ Free extra learning classes in reading, writing, speaking and listening
- ✓ The only Eqaals-accredited school in York

## Our Facilities



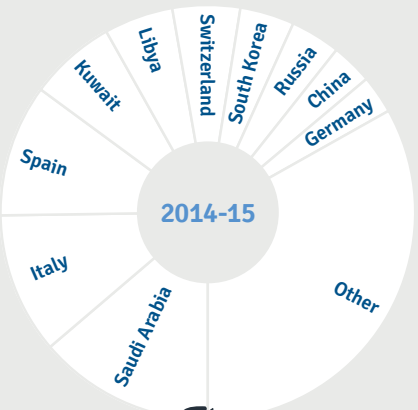
### What are the school's facilities?

- Student common rooms and 2 outdoor courtyards
- Coffee and vending machines
- Wi-Fi available throughout the buildings
- Multi-media centre and library supervised by staff
- Dedicated multi-faith male and female prayer rooms, subject to availability



## Key Figures

- ✓ Classrooms: 23
- ✓ Maximum class size: 12
- ✓ Minimum age: 16



A total of  
58 nationalities

Data based on the number of individual students from 1st May 2014-30 April 2015, excluding closed groups and Young Learner courses



# Our Courses

At **English Language Centre York** we offer a variety of different courses, from General English to Cambridge Exam Preparation, CELTA teacher-training and more. Our highly qualified and passionate teaching team strive to bring out your best potential.



## General English

🕒 15, 20, 21 or 25 hours per week

Ideal if you want to improve your general English skills, including pronunciation, vocabulary, grammar, speaking, listening, reading, writing and fluency

## Combination Courses

🕒 15 hours of General English per week plus 5 or 10 hours per week of:

- **IELTS:** to gain a qualification that is recognised by over 9,000 organisations worldwide, enabling you to study or work where English is the main language of communication
- **Academic English:** to develop skills for studying at an English-speaking university

## Cambridge Examination Preparation

FCE (First), CAE (Advanced)

🕒 15, 20 or 25 hours per week (15 hours of Cambridge Exam Preparation plus 10 or 15 hours of General English)

Great if you want to gain a valuable English language qualification accepted globally as proof of your English language skills by more than 3,000 educational institutions, businesses and governments

## Special Interest Courses

🕒 15 hours per week

- **English for 50+:** improve your English communication skills with other students aged 50+ in a course filled with fascinating cultural trips and excursions
- **English with Historic Homes and Gardens:** immerse yourself in the Medieval history and architecture of York and its surroundings while developing your General English skills
- **Teacher Immersion:** for non-native English language speakers, this course helps you learn key skills to teach successfully and effectively in the English language



In addition we also offer the courses listed below:

- **Study Year courses** (long term General English or Combination)
- **Private tuition**
- **CELTA** teacher-training course and the **Delta-orientation** course

Some courses have minimum student numbers, and level requirements from B1 Intermediate upwards. Please contact us for details.

# Accommodation

# Experience English



At **English Language Centre York** we offer two types of accommodation:

## Homestay

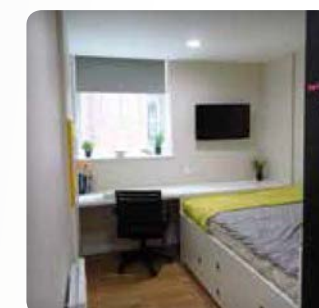
Immerse yourself in York life with a local homestay host

- 15 – 30 minutes from the school by bus
- Facilities include shared bathroom (several private facilities available), study desk
- Meals provided on a half board or full board basis
- Internet access is available in most homestay accommodation

## Student Residence

Live in a flat with other students whilst enjoying your own independence in our new residence, **Student Castle**

- 10 minutes from the school on foot
- Facilities in this ultra-modern flat include private shower room for each bedroom, study desk, high-tech shared kitchen, access to laundry facilities, on site gym, Wi-Fi and communal common area open 24/7



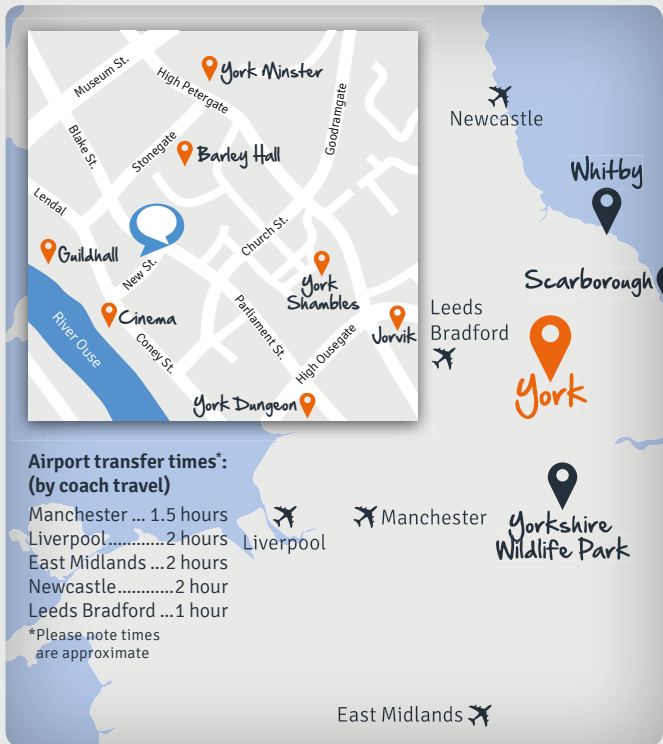
## Testimonial

### Bettina, Switzerland

I enjoy the lovely city of York with the famous minster, the museum garden, the nice streets and beautiful stores. I spend a lot of time with other students from different classes, ages and nationalities.







English Language Centre York organises an exciting and varied social programme giving you the chance to socialise and discover York outside of academic studies.

Typical First Day

To give you a better idea of what to expect, here is an example of what your first day could look like.\*

08.30 - 10.30	Arrivals, team welcome, tour of the school, and placement tests
10.30 - 11.00	Break
11.00 - 12.30	Receive your timetable, meet your teacher and begin your lesson with a warm up and conversation with your fellow students
12.30 - 13.30	Lunch
13.30 - 16.15	Afternoon classes or join the York Walking Tour led by a member of the team to find out about the history and culture of the city

Speaking club  
(Mon 16.30)

Ping Pong Competition  
(Tues 19.00)

Cinema  
(Wed 19.00)

Listening Club  
(Wed 16.30)

\*Please note class times are subject to change depending on your chosen course; activities vary and some may incur an additional charge, if you wish to take part in every social activity you should allow a budget of approximately £12-20 per week. \*\*For over 18s only

Testimonial

Jui-Tzu, Taiwan

I've had special and happy experiences at York and the teachers are lovely and helpful. I wish I could stay longer.



Social Activities

- Museums
- Cinema trips
- Theatre
- Pub nights\*\* and restaurant trips
- Live music nights
- Ping Pong Competitions

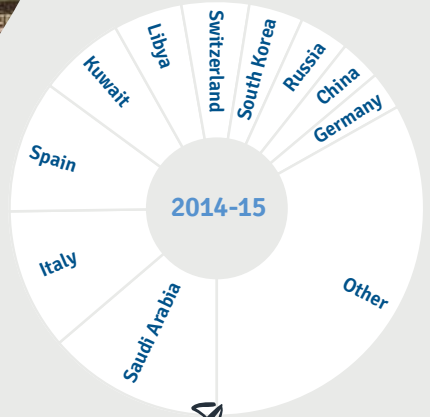


Located in the heart of one of the UK's most beautiful and historic cities, **Edinburgh Language Centre** is a great location to develop your language skills whilst enjoying a rich cultural heritage.



## Key Facts

- ✓ Established in 2002
- ✓ The only Equals-accredited school in Scotland
- ✓ Beautiful Georgian building
- ✓ Located in the city centre
- ✓ Great views of Edinburgh Castle
- ✓ Interactive whiteboards in every classroom
- ✓ Social activities led by Experience English staff
- ✓ Used as a Fringe venue for the first time in 2014



**A total of 42 nationalities**

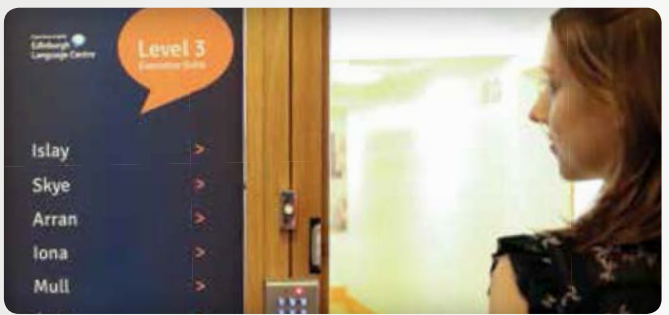
Data based on the number of individual students from 1st May 2014-30 April 2015, excluding closed groups and Young Learner courses

## Our Facilities



### What are the school's facilities?

- Student common room
- Vending and coffee machines
- Library and study centre, supervised by qualified teaching staff
- Computer room
- Extended opening hours to 8pm on most weekday evenings
- Wi-Fi available throughout the building



## Key Figures

- ✓ Classrooms: 14
- ✓ Maximum class size: 12\*
- ✓ Minimum age: 16



\*Maximum class size is 15 for the period of June to September



# Our Courses

At **Edinburgh Language Centre** we offer a variety of different courses, from General English to Executive courses, Cambridge Exam Preparation and more. If you are on a course of 20 hours or more, we will do our best to ensure you are taught by at least two different teachers throughout your stay.




## General English

 **15, 20 or 25 hours per week**


Ideal if you want to improve your general English skills, including pronunciation, vocabulary, grammar, speaking, listening, reading, writing and fluency

## Combination Courses

 **15 hours of General English per week plus 5 or 10 hours per week of:**

- **Business English:** to help prepare you for studying a business course or working in a professional business environment
- **IELTS:** to gain a qualification that is recognised by over 9,000 organisations worldwide, enabling you to study or work where English is the main language of communication

## Cambridge Examination Preparation FCE (First) and CAE (Advanced)

 **15, 20 or 25 hours per week (15 hours of Cambridge Exam Preparation plus 10 or 15 hours of General English)**

Great if you want to gain a valuable English language qualification accepted globally as proof of your English language skills by more than 3,000 educational institutions, businesses and governments

## Executive Courses (mini group, combined or private options)

 **15 to 25 hours per week\***

Specifically designed to enhance your pre-existing English skills in the world of work, our Executive courses offer a more exclusive environment in which to improve your English with small classes or one-to-one tuition, providing close personal attention tailored to your specific needs



### NEW! Your Pathway to University

Ask us how we can help you get onto an EIC pathway programme, giving you a range of entry options to undergraduate and postgraduate study at Edinburgh Napier University.

In addition we also offer the courses listed below:

- **Study Year courses** (long term General English or Combination)
- **Special Interest courses:** English for 50+, English at the Edinburgh Festivals, Teacher Immersion, Edinburgh Christmas Programme
- **Private tuition**
- **CELTA teacher-training course**

Some courses have minimum student numbers, and level requirements from B1 Intermediate upwards. Please contact us for details.

# Accommodation



At **Edinburgh Language Centre** we offer two types of accommodation:

### Homestay

Immerse yourself in Edinburgh life with a local homestay host, arranged by an external agency

- 30 – 45 minutes from the school by bus
- Single or twin rooms
- Facilities include shared or private bathroom, study desk, washing machine, living room
- Meals provided on a bed-and-breakfast or half board basis
- Internet access is available in all homestay accommodation

### Student Residence

Live with other students whilst enjoying your own independence

- 30 minutes from the school on foot
- Facilities include en-suite bathroom, study desk, washing machine, living room, kitchen (self-catering) and Internet access



## Testimonial

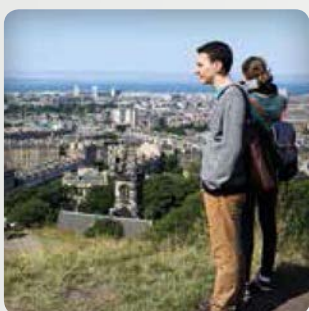
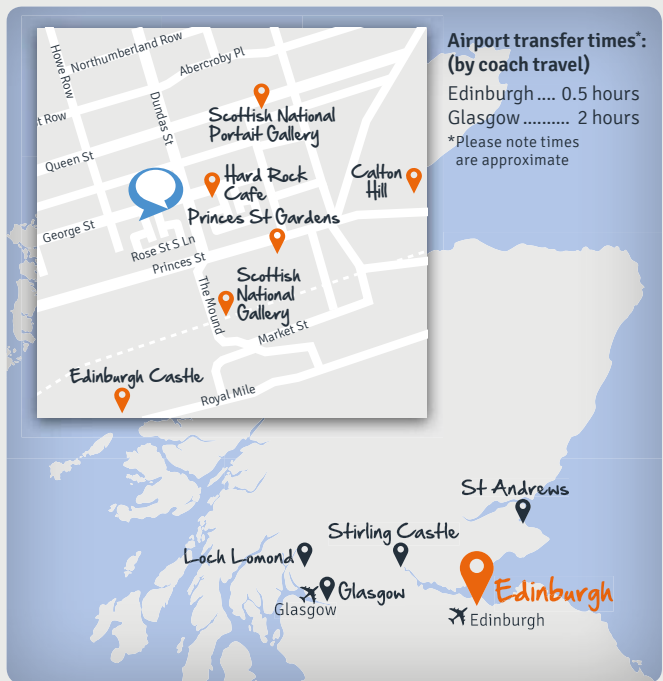
### Talal, Saudi Arabia

When I first arrived, my host family were very welcoming and made me feel at home. The school offers many activities that help me improve my language. All of the staff are very kind and the lessons help me improve all my English skills. I would recommend this school to anyone.



\*Mini group option is 15 hours per week; combined course is 20 or 25 hours per week; private classes are 15-25 hours per week; 30 hours are available on request





**Edinburgh Language Centre** organises an exciting and varied social programme giving you the chance to socialise and discover Edinburgh outside of academic studies.

**Typical First Day**

To give you a better idea of what to expect, here is an example of what your first day could look like.\*

09.00 – 10.30	Arrivals, team welcome, tour of the school, and placement tests.
10.30 – 11.00	Break
11.00 – 12.30	Lesson: Start working on the theme of the week and real-life language skills. At peak times, pronunciation workshops and timetables are also issued at this time.
12.30 – 13.30	Lunch
Afternoon	Join the Edinburgh Walking Tour led by a member of the team to find out about the history and culture of the city; if you are on a 20 or 25 hour course, you will take part in afternoon classes.

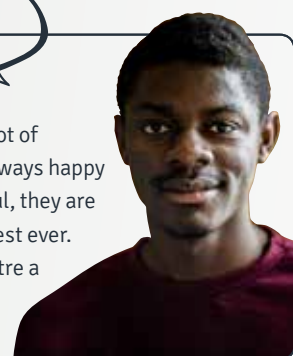
- Scottish Dancing**  
(Mon 19.00)
- Palace of Holyrood**  
(Wed 20.00)
- Conversation Club**  
(Thurs 20.00)
- Rosslyn Chapel**  
(Fri 14.30)

\*Please note class times are subject to change depending on your chosen course; activities vary and some may incur an additional charge, if you wish to take part in every social activity you should allow a budget of approximately £15-30 per week. \*\*for over 18s only.

**Testimonial**

**Joelson, Angola**

The school is amazing and with a lot of facilities. The team is awesome, always happy to help. The teachers are wonderful, they are the most experienced and friendliest ever. It makes Edinburgh Language Centre a great place to learn English!



**Social Activities**

- National museums
- BBQs in the park
- Calton Hill
- Edinburgh Castle
- Theatre trips and ghost tours
- Festivals and Highland tours
- Restaurant and pub nights\*\*





Young Learners

# Young Learner programmes

Our summer centres for 9-17 year olds are located all across the UK, with centres in Southern, Central and Northern England as well as Scotland.

With a dedicated Young Learner team who are committed to delivering exciting summer programmes, we offer an interactive and hands-on mix of academic and social activities that are carefully designed to immerse you in British culture from Day One. Our goal is to deliver academic excellence and expertise built from years of experience, making your stay with us truly unforgettable.

## Which programme is right for you?

### Young Learners EXPERIENCE

This course is for you if you:

- Want to improve your general English
- Want to have fun doing activities with new friends
- Like to have a mix of activities, sports and sightseeing
- Are of any level in English

### Young Learners SPORTS

This course is for you if you:

- Want to improve your general English
- Want to improve your ability in tennis or horse-riding
- Are of any level in English

### Young Learners EDINBURGH LIVE

NEW! Edinburgh Live:

- This year Edinburgh Language Centre are launching a brand new, interactive Young Learners programme designed to immerse you fully in Scotland's beautiful capital city. Lessons take place in and around the city where you will interact with locals to complete exciting projects, putting your English to the test in real-life situations. See p.45 for more details.

### Young Learners CULTURE

This course is for you if you:

- Want to improve your general English
- Want to practise your English in and around the city
- Want to learn about the local culture and heritage
- Prefer sightseeing to activities and sports
- Are of any level in English





# Why Experience English?

## Student Welfare

Your welfare is our priority. We are members of Young Learners English UK which works hard to raise the standards of all UK junior vacation courses.

In accordance with British Council guidelines and our own welfare policies, all residential students are supervised at all times and you are not permitted to leave the centre without a member of our staff or your group leader (with prior permission).

If you are in homestay accommodation, you will travel by public transport. Our team or your group leader will assist and accompany you where possible. After evening activities, you will travel in small groups in pre-ordered taxis back home\*.

## Accommodation

**Homestay:** In certain centres you may choose to stay in homestay accommodation with carefully selected local hosts. You will normally eat two meals a day with your host, and will usually share a room with one other international student. A limited number of single rooms are available on request (at a supplement).

**Residences:** We offer residential accommodation in a variety of university campuses and private boarding schools. Standard rooms will share bathroom facilities and typically range from two to six beds, in a traditional dormitory environment. En-suite rooms are available in some locations and will normally be single rooms.

## What to expect from our courses

- Courses for 9 – 17 year olds, depending on centre\*
- 15 hours of English language tuition a week  
Maximum of 15 students per class, normally in mixed nationality classes
- End-of-course certificate and academic report
- Full board accommodation in residences or homestay. Some homestays are organised by an external agency, please ask for more details
- One full-day excursion per week on all courses
- Minimum one half day excursion per week
- Full evening activity programme  
(up to 3 nights per week for homestay accommodation\*\*)

\*Please note that age restrictions and conditions apply. In some centres over 18s may be present on junior courses in closed groups; adult students may also be present within the same teaching building. \*\* The number of nights provided to those in Homestay accommodation differs between centres. Please refer to our website or ask on registration.



\*Available for those on the full programme.



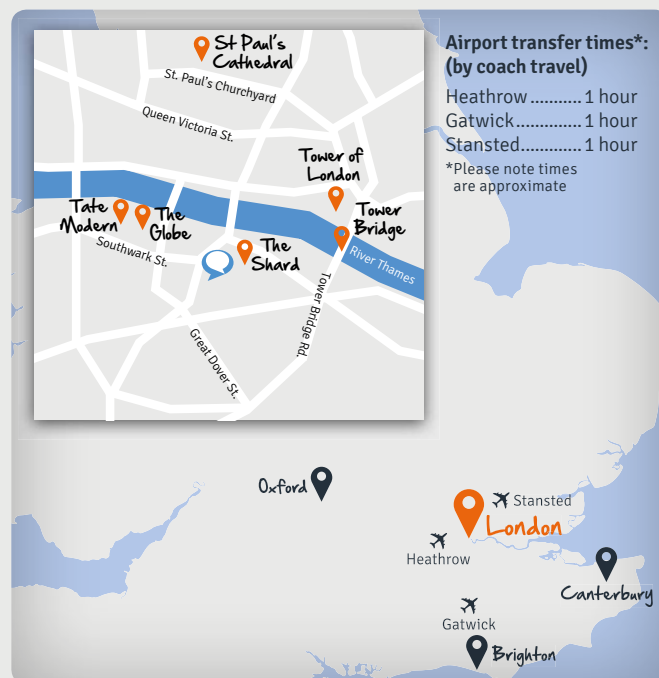
## Guided Learning

- Teachers hold a CELTA or equivalent qualification
- Lessons to develop communication skills and confidence, especially through speaking and listening
- Mixed nationality classes to encourage English speaking and improve your understanding of other cultures
- Weekly group projects, based around specific tasks
- Testing on arrival so you are organised into classes. On completion, you will be presented with a certificate which uses the Common European Framework of Reference (CEFR) to highlight progress



# King's College, London Bridge

King's College, London Bridge offers you the opportunity to discover one of the greatest and most exciting cities in the world, staying in the heart of London's central zone. The centre offers high quality teaching facilities at King's College London and daily excursions in and around London.



## Essential Information

**Central London (Zone 1)**  
**7-day programme**  
Young Learners **Culture Programme**  
**Residential** accommodation  
Leading university campus next to The Shard  
**End-of-course** certificate



<b>College Address:</b>	Guy's Campus, King's College London, London, SE1 1UL
<b>Centre type:</b>	University Campus
<b>Accommodation:</b>	Residential
<b>Capacity:</b>	320
<b>Age range:</b>	12 – 17*
<b>Arrival day:</b>	Sunday
<b>Course start dates:</b>	26 June, 3, 10, 17, 24, 31 July

\*Individual students must be 14 years of age; courses for students up to the age of 20 years old may be available on selected dates.

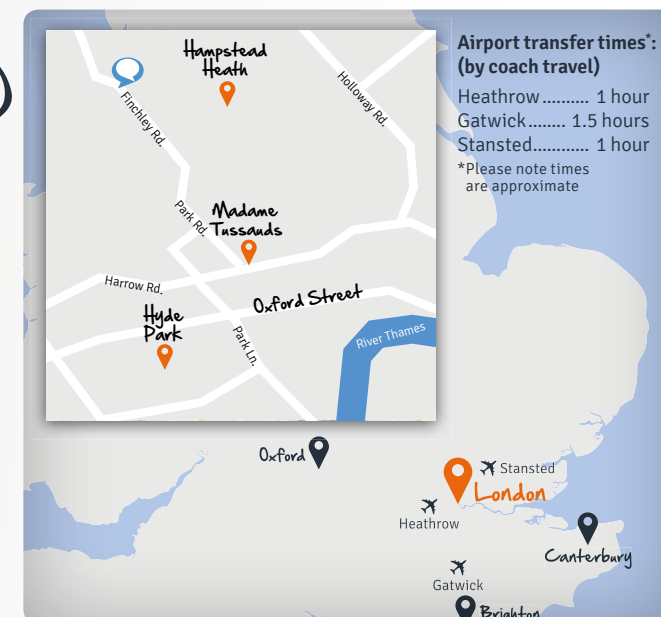
# Hampstead School of English

Hampstead is one of London's best-preserved old villages, with immediate access to central London and within walking distance of the ancient park of Hampstead Heath. With its peaceful setting, it is the perfect location to study English whilst exploring Britain's vibrant capital.



## Essential Information

**London (Zone 2), easy access to centre**  
**6-day programme**  
Young Learners **Culture Programme**  
**Homestay** accommodation  
Classes held **on-site** or at a **local centre**  
**End-of-course** certificate



<b>College Address:</b>	Hampstead School of English, 553 Finchley Road, London, NW3 7BJ
<b>Centre type:</b>	Year round school with classes held on-site or at a nearby dedicated young learner centre
<b>Accommodation:</b>	Homestay
<b>Capacity:</b>	60
<b>Age range:</b>	14 – 17*
<b>Arrival day:</b>	Sunday
<b>Course start dates:</b>	26 June, 3, 10, 17, 24, 31 July. Also available for groups year-round.

\*Please note that age restrictions and conditions apply. Please ask on registration for further details. Individual students must be over the age of 14. Lessons may also be taught off site dependent upon student numbers. Adult students will also be present in the school.



# Reed's School, Cobham

Reed's School, London Cobham, is a traditional English boarding school within close proximity to London's busy city centre. This rural school is one of our most popular language centres and offers a fantastic range of sports facilities, including specialist coaching in tennis and horse-riding as well as an indoor swimming pool and Astroturf pitches.



## Essential Information

40 minutes from London by train

7-day programme

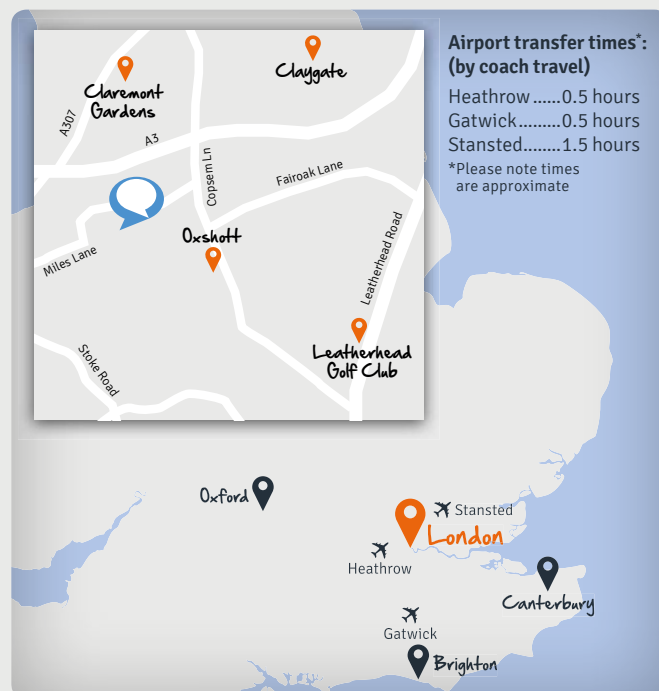
Young Learners Experience or English

Plus Sports Programmes

Residential accommodation

Tennis and Horse Riding available

End-of-course certificate



Airport transfer times\*  
(by coach travel)

Heathrow .....0.5 hours

Gatwick.....0.5 hours

Stansted.....1.5 hours

\*Please note times are approximate

**College Address:** Reed's School, Sandy Lane, Cobham, Surrey, KT11 2ES

**Centre type:** Traditional boarding school

**Accommodation:** Residential

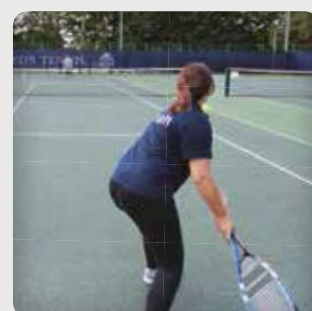
**Capacity:** 200

**Age range:** 9 – 16\*

**Arrival day:** Sunday

**Course start dates:** 10, 17, 24, 31 July

\*Please note that age restrictions and conditions apply.



# Bournemouth College

Bournemouth is a beautiful seaside town in the South of England with seven miles of sandy beaches and a stunning coast that looks out over the English Channel. It is a vibrant and cosmopolitan location that is bustling with shops, cafés and restaurants, making it the perfect place to learn English by the sea.



## Essential Information

College campus by the sea

7-day programme

Young Learners Experience Programme

Residential accommodation

Sports, activities and cultural excursions

End-of-course certificate



Airport transfer times\*  
(by coach travel)

Southampton ... 1 hour

Heathrow ..... 2 hours

Stansted..... 2.5 hours

Gatwick.....2.5 hours

\*Please note times are approximate

**College Address:** Bournemouth College, Landsdown Campus, Meyrick Road, Bournemouth, BH1 3JJ

**Centre type:** College campus

**Accommodation:** Residential

**Capacity:** 200

**Age range:** 12 - 17\*

**Arrival day:** Sunday

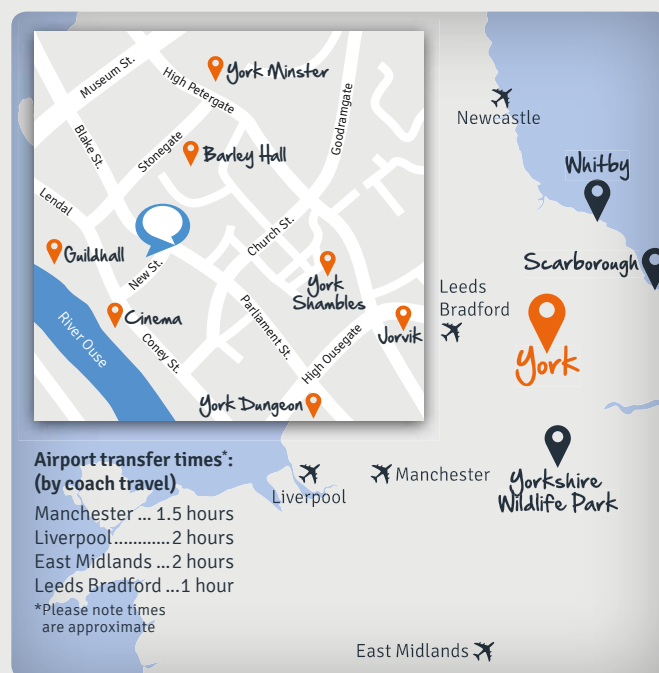
**Course start dates:** 3, 10, 17, 24, 31 July

\*Please note that students up to the age of 20 years old may be present on site in closed groups on selected dates. Individuals must be 14 years old or older.



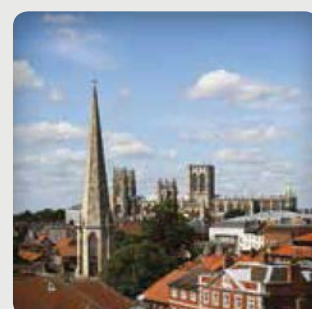
# English Language Centre York

Located in the scenic and medieval city of York, English Language Centre York is a beautiful place to learn English while immersing yourself in Britain's rich history. With a diverse mix of students, you will experience the best that York has to offer while making friends from all around the world.



## Essential Information

**Central York** - small and friendly city  
**6-day programme**  
 Young Learners **Experience Programme**  
**Homestay** accommodation  
 Beautiful **Georgian building**  
**End-of-course** certificate



**College Address:** English Language Centre, York, 5 New Street, York, YO1 8RA  
**Centre type:** City centre school  
**Accommodation:** Homestay  
**Capacity:** 150  
**Age range:** 12 - 17\*  
**Arrival day:** Sunday  
**Course start dates:** 26 June, 3, 10, 17, 24, 31 July.  
 Also available for groups year-round.

\*Please note that age restrictions and conditions apply. Please ask on registration for further details. In this centre, over 18s might be present on junior courses in closed groups.

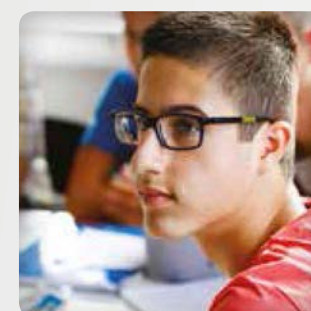
# Manchester Academy of English

Manchester is one of the most exciting cities in the UK. Our Manchester school has been offering English language courses since 1991 and aims to provide academic quality and support. The summer school works in partnership with Manchester University who provide the residential accommodation.



## Essential Information

**Vibrant city of Manchester**  
**7-day programme**  
 Young Learners **Experience Programme**  
**Residential** accommodation  
**Split site** with classrooms nearby  
**End-of-course** certificate



**College Address:** Manchester Academy of English, St. Margaret's Chambers, 5 Newton St, Manchester, M1 1HL. **At peak times:** Connell College, 301 Alan Turing Way, M11 3BS  
**Centre type:** City centre all year round school with university residence  
**Accommodation:** Residential  
**Capacity:** 120  
**Age range:** 10 - 17\*  
**Arrival day:** Sunday  
**Course start dates:** 26 June, 3, 10, 17, 24, 31 July. Also available for groups year-round.

\*Please note that age restrictions and conditions apply. Please ask on registration for further details. Individual students must be over the age of 12. Homestay options available for groups on request. Adult students will also be present in the school.



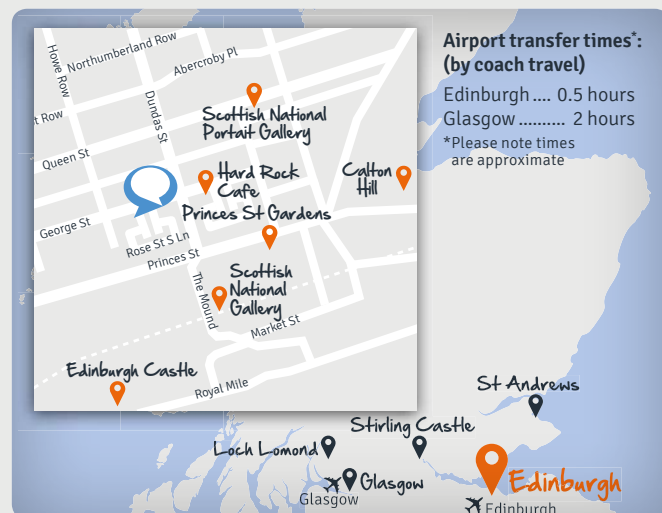
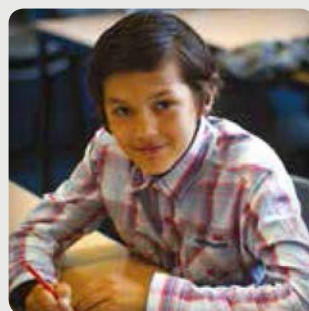
# Edinburgh Language Centre

Studying in Edinburgh gives you the opportunity to learn more about the city's historical attractions, as well as visit other important destinations in Scotland. Edinburgh Language Centre is housed in the elegant surroundings of Edinburgh's New Town – close to the main shopping streets and all of Edinburgh's central attractions.



## Essential Information

**Central Edinburgh  
6-day programme**  
Young Learners **Culture Programme**  
**NEW: Edinburgh Live**, a fully immersive course  
**Homestay** accommodation  
**End-of-course** certificate



**College Address:** Edinburgh Language Centre, 62- 66 George Street, Edinburgh EH2 2LR  
**At peak times:** Drummond Community High School, 41 Bellevue Pl, Edinburgh, EH7 4BS  
**Centre type:** City centre school or local high school (15-minute walk from Princes St)  
**Accommodation:** Homestay  
**Capacity:** 150  
**Age range:** 12 – 17\*  
**Arrival day:** Sunday  
**Course start dates:** 26 June, 3, 10, 17, 24, 31 July. Also available for groups year-round.

\*Individual students must be aged 14-17. Please note that age restrictions and conditions apply. In this centre, over 18s may be present on junior courses in closed groups. Adult students may also be present in the school. Courses may be held at Drummond Community High School or Edinburgh Language Centre on George Street.

# Edinburgh Live

Learn English in Edinburgh in a brand new, fully interactive course for groups that focuses on living and experiencing the English language in real-life situations – all day, every day!

**Your lessons will take place on location in the heart of the beautiful city of Edinburgh, where you will:**

- Learn English through immersive and interactive projects
- Put your communication skills to the test through interacting with real Scottish people
- Visit secret locations, create works of street art and discover the best views of the city, creating your own projects and carrying out a series of investigations whilst taking charge of your own learning experiences
- Create a video based on a weekly theme, using audio clips, videos and blog entries to build your very own e-portfolio throughout the course
- Build your confidence, becoming more independent both as a learner and as an individual
- Begin and end each day in the classroom, giving you the opportunity to prepare for the day ahead and discuss your progress.



## Example Edinburgh Live programme

	09:00-09:45	09:45-10:30	10:30-11:00	11:00-12:30	12:30-13:30	13:30-16:45	16:45-17:30	17:30-19:30	19:30-22:00	23:00
Sun	Arrivals								<div><div></div><div></div><div></div><div></div><div></div><div></div><div></div></div> <div>Dinner</div>	<div><div></div><div></div><div></div><div></div><div></div><div></div><div></div></div> <div>Lights Out</div>
Mon	Classroom Preparation	Introduction Lesson	Break	National Gallery: Scottish Landscapes	Lunch	Walking Tour and Local Area Introduction	Classroom Feedback			
Tue		Museum of Scotland: Scottish History Trail		Museum of Scotland: Life Around the World		Scottish Parliament		Ceilidh		
Wed		Modern Art Gallery: Is Modern Art really Art?		Dean Village: Looking after Edinburgh's Heritage		Old Town Scavenger Hunt		Evening City Tour		
Thu		People's Story Museum: Life in the 18th Century		The Old City Observatory, Calton Hill: Understanding the Sky		Edinburgh Castle		Games Night		
Fri		Botanic Garden: Plants for Healing		Water of Leith: Nature Trail		E-portfolio preparation and presentation				
Sat	Stirling City and Castle									
Sun	Free Day with Group or Homestay Hosts									
Mon	Classroom Preparation	North Berwick: Town Survey	Break	North Berwick: Town Survey	Lunch	North Berwick - Sea Life Centre	Classroom Feedback	<div><div></div><div></div><div></div><div></div><div></div><div></div><div></div></div> <div>Dinner</div>	<div><div></div><div></div><div></div><div></div><div></div><div></div><div></div></div> <div>Lights Out</div>	
Tue		Scottish Writers' Museum: Stevenson and Dr Jekyll and Mr Hyde		Scottish Writers' Museum: The poetry of Robert Burns and Harry Potter Tour		Arthur's Seat and Holyrood Park				Scavenger Hunt
Wed		Museum of Scotland: What can we learn from the Ancient Egyptians		Museum of Scotland: What can we learn from animals?		Gorgie City Farm				Quiz Night
Thu		Museum of Childhood: Are yesterday's toys better than today's?		Museum on the Mound: What is the price of money?		Edinburgh Dungeons				Disco
Fri		National Portrait Gallery: A Character in Time		Georgian House: 18th Century Society		E-portfolio preparation and presentation				
Sat	Departures									

Please note this programme is to be used as an example only, activities, projects and timings may vary. This programme is only available for groups, therefore we cannot guarantee a nationality mix.



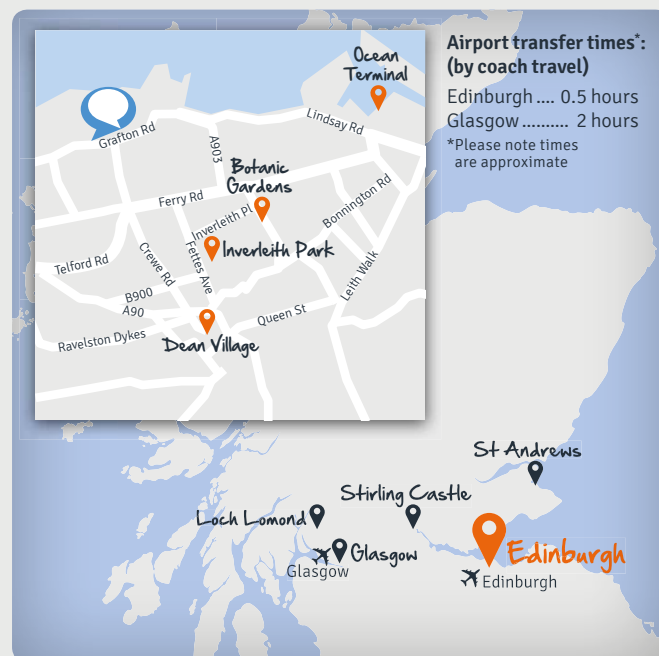
## Edinburgh College (Telford Campus)

Located on the banks of the Firth of Forth, a short bus journey from Edinburgh city centre, this impressive modern campus has excellent sports and activity facilities. Edinburgh College makes a great venue for a summer programme.



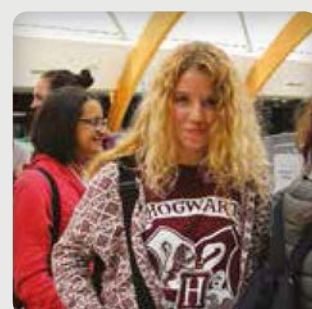
### Essential Information

20-minute bus ride to central Edinburgh  
6- or 7-day programme  
Young Learners Experience Programme  
Residential or homestay accommodation  
Modern college campus near the sea  
End-of-course certificate



<b>College Address:</b>	Edinburgh College, 350 West Granton Road, Edinburgh, EH5 1QE
<b>Centre type:</b>	College Campus
<b>Accommodation:</b>	Residential or homestay
<b>Capacity:</b>	258 (108 residential; 150 homestay)
<b>Age range:</b>	12 – 17*
<b>Arrival day:</b>	Sunday
<b>Course start dates:</b>	26 June, 3, 10, 17, 24, 31 July.

\* Please note that age restrictions and conditions apply, please ask for further details on registration. Individual students must be over the age of 12, or 14 if staying in homestay accommodation.



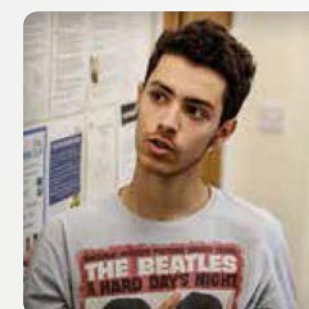
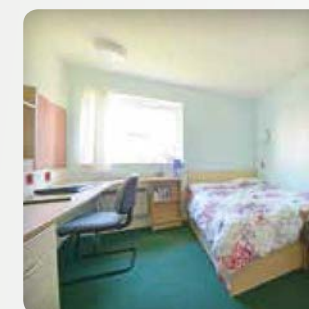
## Nottingham University (Sutton Bonington Campus)

Located within the University of Nottingham's beautiful 100-acre campus in the quaint village of Sutton Bonington, this is the perfect place to learn English in the heart of British countryside. Only 10 minutes from East Midlands airport and 15 minutes to the train station, it is in an ideal central location within easy reach of all major cities.



### Essential Information

100-acre campus near Nottingham  
7-day programme  
Young Learners Experience Programme  
Residential and homestay accommodation  
State-of-the-art facilities  
End-of-course certificate



<b>College Address:</b>	The University of Nottingham, Sutton Bonington Campus, Sutton Bonington, Leicestershire, LE12 5RD
<b>Centre type:</b>	University campus
<b>Accommodation:</b>	Residential and homestay
<b>Capacity:</b>	200 residential; 50 homestay
<b>Age range:</b>	10 – 17*
<b>Arrival day:</b>	Sunday
<b>Course start dates:</b>	10, 17, 24, 31 July. Also available for groups year-round.

\*Please note that age restrictions and conditions apply. Please ask on registration for further details. Individual students must be over the age of 12. Lessons may also be taught off site dependent upon student numbers. Adult students will also be present in the school.



# Young Learners: Year Round

At Experience English, we accept **Young Learner** groups at any time throughout the year at five of our locations, working closely with you to create a programme that meets your group's requirements.

With your choice of activities and tuition hours\*, our year round **Young Learner** programmes focus on activating language in an immersive and exciting environment, with dynamic teaching sessions, project work and cultural activities.

## Hampstead School of English



- Established in 1977, it is rated 3rd in the Top 10 Best Value Schools in London\*\*
- Located in the beautiful area of Hampstead in London
- Newly refurbished with great facilities including a cinema, café and two outdoor patios
- Homestay accommodation with local hosts

## English Language Centre York



- A highly accredited centre with over 17 years of experience
- Located in the heart of York, a small and friendly city
- Lovely facilities in a beautiful old building, including two outdoor courtyards, student common rooms and a multi-media centre
- Homestay accommodation with local hosts

## Edinburgh Language Centre



- Established in 2002
- Situated in the centre of Edinburgh, with great views of Edinburgh Castle
- With wonderful spacious classrooms, the school also houses a large student common room, vending machines, a library and study centre, and a computer room
- Homestay accommodation with local hosts

## Nottingham University (Sutton Bonington Campus)



- Brand new year round centre for 2016
- Located in the 100-acre campus of the University of Nottingham, in the heart of the English countryside
- Modernised sports centre and state-of-the-art facilities
- Residential accommodation available year round

## Manchester Academy of English



- Established in 1991, it is the longest established private English language school in the city
- Located in central Manchester, five minutes from Manchester Piccadilly train station
- Facilities include a large, modern student lounge with table football, Xbox and plasma screen TV
- Residential accommodation

## What's Included?

- **Bespoke** service to design a course that fits your needs
- **High quality** teaching and activity team
- **All** learning materials
- **24/7 support** and welfare
- **Academic** report
- **End-of-course** certificate

\* Activities and tuition hours are all subject to availability.

\*\*EL Gazette, survey of private sector schools inspected by both the British Council and ISI, May 2013.

Life changing learning



# Terms and Conditions

## CONDITIONS

Please read these booking conditions carefully, they form an important part of the contract for your booking.

## YOUR CONTRACT

Your contract is with Experience English Limited, a company incorporated and registered in England and Wales. Experience English is a trading name of TUI UK Limited, registered in England No 4040338. Our registered office is: TUI Travel House, Fleming Way, Crawley, West Sussex, RH10 9QL. TUI UK Limited is a member of the TUI AG group of companies which is the world's number one integrated tourism business, operating in 180 countries with 31 major source markets and over 30 million customers. TUI AG's Registered Office is Karl-Wiechert-Allee 4, 30625 Hanover, Germany. Registered in Germany (Berlin/Hanover), Company Number HRB 6580. For more information visit [www.tuigroup.com](http://www.tuigroup.com)

When you make a booking, you guarantee that you are 18 years or over and have the authority to accept and do accept on behalf of your party the terms of these booking conditions. If you are under 18 years, a parent or guardian must make the booking on your behalf and accept these booking conditions. On receipt of the completed application form and full fees, we will issue confirmation of the booking including a confirmation invoice, acceptance letter and, if required, a visa support letter will then be issued. A contract will exist as soon as we issue our confirmation invoice. This contract is made on the terms of these booking conditions. This contract, and any other claim or dispute arising from or related to this contract, will be governed by English law and the courts of England and Wales shall have exclusive jurisdiction over any claim arising out of it.

## MAKING A BOOKING AND PAYMENT

All students must book in advance of their course start date. Full booking fees are due and must be paid at the time of booking. At their discretion, the booking team may accept deposits of 20% for Non-Visa Students and Direct Visa Nationals on the provision that the request is made in writing and authorized by a manager and full payment is paid at least 56 days prior to arrival. If you require the services of a courier to deliver your documentation, the cost incurred will be paid by you. All payments are to be made in Pounds Sterling. In some cases these rules do not apply to wholesale partners whose payment terms are outlined in the wholesale agreement made between the two parties.

You can pay by cash, bank transfer, cheque or credit card. For credit card payments, we add a 3% surcharge on the total amount to cover card charges. There may be a charge for direct debit card payments, please ask at time of payment. Please do not send cash in the post. Bank details for bank transfers and details for whom to make cheques payable should be requested at time of booking. Cheques should be paid at least 5 days before the start date. We reserve the right to cancel a booking without refund or compensation if payments are not made when due.

## THE PRICE YOU PAY

All prices we advertise are accurate at the date published, but we reserve the right to change any of those prices from time to time. You will be advised of the current price of the course, or the course and accommodation that you wish to book before your contract is confirmed.

## IF YOU MAKE A CHANGE TO YOUR BOOKING

If you wish to make a change to the date of your booking, the person who made the booking must put such request in writing to us at least 28 days before the booking start date or the arrival date whichever is earlier. If such notice is not given an amendment fee of £60 will be charged. If you change the date of your booking more than once, an amendment fee will be charged for the second and any subsequent changes, irrespective of notice given. Please note that we cannot guarantee that we will be able to accommodate your request but we will endeavour to do so. Students with 1:1 private tuition must provide notice of at least 5 working days if you wish to rearrange a lesson; no refund or rearrangement will be provided for such non-attended classes or when less than 5 working days' notice is given. You cannot exchange blocks of classes for private tuition.

## IF YOU CANCEL YOUR COURSE

If you wish to cancel a booking for any reason, the person who made the booking must put such request to cancel in writing to us. If you wish to cancel a booking due to a visa refusal, we will refund any booking fees which have been paid by you, less the registration fee and any other charges we may incur as a result of your cancellation, provided that: a) Notice of your visa refusal is sent to us a minimum of one week before your course commences; and b) Official written confirmation of the visa refusal from the Home Office or British Consulate/Embassy is sent to us before the course was due to commence.

If you wish to cancel a booking for any reason other than visa refusal, booking refunds for such cancellations depend on the amount of notice given and are as specified below:

- **More than 28 days before the booking start date or the arrival date whichever is earlier:** refund of total booking fees, less deposit, registration fee and any other charges we may incur as a result of your cancellation.
  - **Between 28 – 15 days (inclusive) before the booking start date or the arrival date whichever is earlier:** refund of 75% of total course fees, less registration fee or any other charges we may incur as a result of your cancellation. If three weeks' notice is given, the school can issue, at their discretion, a course voucher to the value of the course remaining. Course vouchers are non-transferable, valid for one year, and cannot be exchanged for 1:1 private tuition. The voucher is null and void if an insurance claim is issued. No refund issued for cancellation of specialist courses within 28 days of course start date.
  - **Between 14-8 days (inclusive) before the booking start date or the arrival date whichever is earlier:** refund of 50% of total course fees, less registration fee or any other charges we may incur as a result of your cancellation. No refund issued for cancellation of specialist courses within 14 days of course start date.
  - **7 days or less before the booking start date or the arrival date whichever is earlier:** no refund will be given if you choose to cancel the course once it has commenced. Please note in the event that you cancel your booking for any reason, amendment fees paid by you in respect of the booking, if any, are non-refundable. No refund issued for cancellation of specialist courses within 7 days of course start date.
- If a visa is delayed beyond your course start date you must have adequate insurance to cover any eventual cancellation charges.

## ACCOMMODATION

Adult students can only book a twin room if you know the person with which you are sharing. At our discretion, Young Learners may be required to book single room accommodation instead of twin room accommodation subject to availability.

For Young Learners, there is a maximum duration of twenty-seven consecutive nights with a homestay host. If you require a longer homestay programme you will be required to move to a

different centre during your stay.

If you are arriving between the hours of 21:00 – 09:00 may be asked to book alternative accommodation on your first night at your own cost to avoid a late or early arrival to your intended accommodation. Experience English Limited reserves the right to charge a supplement for any student or group arriving between the hours of 21:00 – 09:00.

If you wish to leave your accommodation early, you will be charged for 3 weeks of accommodation. Experience English Limited reserves the right to charge a supplement for any student or group arriving between the hours of 21:00 – 09:00. If the school books accommodation through a third party provider, terms and conditions of the provider will apply and will be communicated at the time of booking.

## ARRIVAL / DEPARTURE DATES

Arrivals should normally be on a Sunday (unless specified otherwise in Experience English marketing materials) ready for starting your course on a Monday. Departure days vary according to the school; if booking a course at Hampstead School of English, all departures are on Saturday. We reserve the right to arrange alternative (e.g. Hotel) accommodation for any nights outwith the standard programme dates at your cost. There will be no compensation due for late arrivals and/or missed lessons, activities and excursions missed as a result of not arriving on a scheduled arrival date.

## ATTENDANCE, ABSENCES AND EARLY DEPARTURES

For students studying on an adult course you are required to attend at least 90% of your course in order to receive a course certificate and report, or 80% to meet UKVI requirements. For students studying on Young Learner course full attendance is required. Absence from lessons is not compensated. If you are absent from school for 3 or more days we will contact you by telephone or email to see if we can be of any help or assistance. If we receive no response we will try and contact you again. Where relevant to a visa application, we are duty bound to notify the UK Home Office immediately in the event of persistent non-attendance or course termination.

## CERTIFICATES

All adult students are issued with a certificate on the last day of your course on request, if you have attended 90% of your course. The certificate confirms the level of study at the end of the course. The Company shall levy a charge of £15 per set of certificates that it has to re-issue once the course has finished. Should this occur the certificates shall only be re-issued once full payment has been received.

All Young Learner students are issued with a certificate at the end of your course, providing you have attended 100% of your course.

## POLICIES ON HOLIDAYS

If you are studying on an adult course you are allowed to take 2 weeks holiday for every 12 weeks that you study: for a course of 12 weeks, you can take a maximum of 2 weeks holiday; for a course of 13 to 24 weeks, you can take a maximum of 4 weeks holiday; for a course of 25 to 36 weeks, you can take a maximum of 6 weeks holiday; for a course of 37 to 52 weeks, you can take a maximum of 8 weeks holiday. You must give at least 14 days' notice to the school in writing. Please note that the school has the right to refuse a request for holiday. Some Academic Year and Semester Courses have fixed dates of operation.

If you are studying on a Young Learner course then holidays from your course are not permitted.

## TRANSFERS

Where a coach or private taxi transfer has been booked through the Company, flight details should be received no later than 14 days prior to arrival. The Company reserves the right to levy a charge of £20 per person should these details not be received within the 14 days. Please see the 'Course fee list' for the conditions of the transfer prices.

## ADMINISTRATION CHARGE

All changes outside the notice period in course dates or accommodation, including holidays, have a charge of £60, which must be paid before the change is processed.

## PUBLIC HOLIDAYS

Edinburgh Language Centre may pro-rata tuition costs to account for reduction in tuition hours during the Christmas and New Year public holidays. Any reduction will be reflected in your quote at the time of booking. Edinburgh Language Centre is open on all public holidays with the exception of 25th and 26th December, 1st and 2nd January.

All other schools are closed on all public holidays. There are no reductions or discounts in tuition fees for courses that include a public holiday.

If any public holiday falls on a weekend, the holiday day will apply in the following working week.

## IF WE CHANGE OR CANCEL YOUR BOOKING

Whilst we aim to provide the course, and where applicable accommodation, as booked, we reserve the right to change or cancel your booking. Operation of all bookings are dependent on a minimum number of persons booking the course and we reserve the right to cancel or change your booking for reasons of consolidation due to minimum numbers not being attained on your course.

Subject to 'Our Liability' section below:

- (a) if we make a minor change to your booking we will advise you as soon as reasonably possible;
- (b) if we make a major change to your booking we will advise you as soon as reasonably possible if there is time before your course start date or your arrival date whichever is earlier. You will have the choice of either (i) accepting the change of arrangements, (ii) accepting an offer of alternative arrangements of comparable standards from us if available (you will pay the difference if it was advertised as a higher price than your original booking, or receive a refund of the difference if it was advertised at a lower price than your original booking) or (iii) accepting a refund of the monies you have paid to us for your original booking. Subject to 'Our Liability' section below, if we cancel your booking, we may be able to offer you an alternative. If you accept it, you will pay the difference if it was advertised at a higher price than your original booking, or receive a refund of the difference if it was advertised at a lower price than your original booking, or we would refund the monies you have paid to us for your original booking. We will not be responsible to pay any compensation following a change or a cancellation by us and we will not be liable to reimburse you for any amendment or cancellation fees you incur in terms of other arrangements you have made with other providers under separate contracts.

## CONDUCT AND BEHAVIOUR

When you make a booking through us, you accept responsibility for the proper conduct of all parties included on your booking. We reserve the right to cancel at any time any student's course, or course and accommodation, with no refunds, in the event that, in the reasonable opinion of the Company or the school, the student's behaviour is disruptive or unsatisfactory (including without limitation causes or is likely to cause danger, upset or distress to anyone else or damage to property). Our decision is final. We shall be under no obligation whatsoever to pay compensation or meet any costs or expenses you may incur as a result of your course, or course and accommodation, being terminated. Please note that if your visa status in the UK changes or you are found to be in contempt of visa regulations, we reserve the right to terminate your course without refund of course or accommodation fees.

## OUR RIGHT TO SUBCONTRACT

We shall take reasonable care and skill in providing our services to you in accordance with industry standards. We reserve the right to subcontract various elements of our services (for example accommodation) to reputable companies selected by us. We shall procure that our subcontractors also take reasonable care and skill in providing such subcontracted elements of our services to you in accordance with industry standards. During peak periods we may use additional classrooms on other premises to conduct lessons.

## OUR LIABILITY

We will not be liable:

- (a) where any failure in the performance of the contract is due to: i. you; or ii. acts, events, omission or accidents beyond our reasonable control or the reasonable control of our suppliers, including without limitation war, threat of war, riots, civil disturbances, actual or threatened terrorist activity and its consequences, industrial disputes, natural and nuclear disasters, fire, epidemics, health risks and pandemics, unavoidable and unforeseeable technical problems with transport for reasons beyond our control or that of our suppliers; closed or congested airports or ports, hurricanes and other actual or potential severe weather conditions, flood, and any other similar events;
- (b) for loss of students' property. No compensation, costs, expenses or any other sums will be paid by us in these circumstances. Nothing in this contract shall limit or exclude the liability of either party for death or personal injury resulting from negligence.

## INSURANCE

Insurance is not provided by Experience English. Once a booking has been accepted, you, your group leader or the adult paying for your course agrees to sourcing your own insurance. It is essential that every student, group leader, and/or accompanying adult takes out insurance to cover such events as course cancellation or curtailment; loss of personal effects; loss of passport or tickets; medical expenses and repatriation; personal liability and personal accident. Failure to do so could cause serious problems in the case of an emergency. It is your responsibility to ensure that you are adequately insured. For students staying in accommodation (homestay or residential) arranged by the Company, insurance covering personal liability is highly recommended. If you do not have an insurance policy and an incident occurs, you will be responsible for all costs incurred.

## COMPLAINTS

Our complaint procedure is as follows: if you have a complaint regarding any aspect of the services provided, you should immediately notify your school. In the unlikely event this is not resolved to your satisfaction; you should make an immediate complaint in English in writing to head office at Experience English Customer Service, Edinburgh Language Centre, 62-66 George Street, Edinburgh, EH2 2LR. We will investigate your complaint and if we judge it to be reasonable we will make an appropriate recompense (financial or otherwise). In order to be given a reasonable chance of addressing your complaint, please ensure it is received within one month of the end of your course. If the complaint is not resolved to your satisfaction, you may contact English UK.

## BRIBERY

Experience English Limited shall not engage in any activity, practice or conduct which would constitute an offence under sections 1, 2 or 6 of the Bribery Act 2010 if such activity, practice or conduct had been carried out in the UK.

## PUBLICITY

These booking conditions, our brochures, our website and other publicity materials are the responsibility and property of the Company and the details are published in good faith as of 20 August 2015. We cannot be held responsible for any changes that become known or happen after the brochure is produced and the most up-to-date information can be found on our website. We will use reasonable endeavours to inform you of any material changes for your course before commencement of the course.

## USE OF PHOTOS, VIDEOS AND COMMENTS

By agreeing to these terms and conditions you acknowledge that we or our suppliers or the TUI AG group may use any photo(s)/image(s)/video(s) we, or someone on our behalf take of you or any comments (written or verbal) you make during or in connection with your tour for our promotional/marketing purposes (such as including them in our brochure / website / social media) without obtaining your further specific permission or making any payment to you. Such use may include mentioning your name, age and town / city / area of residence.

## EMAIL CONTACT

By agreeing to these booking conditions, you consent to us (including any of the TUI AG group of companies) using your email addresses gained at the time of booking and during your period of study for future marketing purposes from time to time, including without limitation about special offers, products and services by email. For further details regarding use of your information, please see the 'Privacy Policy' section below, including for information on how to unsubscribe to future marketing by us (including any of the TUI AG group of companies and associated companies).

## PRIVACY POLICY

The Company's Privacy Policy sets out what information we collect, how we collect it, and what we do with it.

- (a) Your Information: this refers to information such as your name, contact details, travel preferences and special needs/disabilities/dietary requirements that you supply us or is supplied to us, including any information about other persons on your booking ("your information"). Your

# Experience English

information is collected when you request information from us, contact us (and vice versa) or make a booking. You are responsible for ensuring that other members of your party are aware of the content of our Privacy Policy and consent to your acting on their behalf in all your dealings with us. We will update your information whenever we can to keep it current, accurate and complete.

(b) Our Use of Your Information: (1) For the purpose of providing you with our services, we may disclose and process your information outside the UK/EEA. In order for you to travel abroad, it may be mandatory (as required by government authorities at the point(s) of departure and/or destination) to disclose and process your information for immigration, border control, security and anti-terrorism purposes, or any other purposes which they determine appropriate. These requirements may differ depending on your destination and you are advised to check. Even if not mandatory, we may exercise our discretion to assist where appropriate. (2) We may collect and process your information for the purposes set out in our registration with the Office of the Information Commissioner, and disclose the same to our group companies for business purposes and also to companies who act as "data processors" on our behalf, or to our service providers operating systems or business functions on our behalf (some of whom are located outside the UK/EEA). These business purposes include administration, providing services (and contacting you where necessary), customer care, service quality, business management and operation, reorganisation/ structuring/sale of our business (or group companies), risk assessment, security, fraud and crime prevention/ detection, monitoring, research and analysis, marketing, customer purchasing preferences and trends, dispute resolution, credit checking and debt collection. (3) Information (such as health or religion) may be considered "sensitive personal data" under the Data Protection Act 1998. We collect it to cater to your needs or act in your interest, and we are only prepared to accept sensitive personal data on the condition that we have your positive consent. By booking with us you also agree for your insurers, their agents and medical staff to disclose relevant information and sensitive personal data to us in circumstances where we need to act on your behalf or in the interest of passengers or in an emergency. If you do not agree to Our Use of Your Information above, we cannot do business with you or accept your booking.

(c) Direct Marketing Material: (1) We (including any of the TUI AG group of companies) may from time to time contact you with information on offers of goods and services, brochures, new products, forthcoming events or competitions from our holiday divisions and our group companies. Our websites will assume you agree to e-communications when you make a booking. (2) You may indicate your preference regarding receiving third party direct marketing material. (3) If do not wish to receive such information or would like to change your preference, please refer to point (2) of "Your Rights" below.

(d) Your Rights: (1) On completing our Data Subject Access Request form, you are entitled to a copy of the information we hold about you (for a £10 fee) and to correct any inaccuracies. (2) You have the right to ask in writing not to receive direct marketing material from us. If available, you can amend your previous preference on our website(s), use our "unsubscribe email" or refer to our literature containing instructions. Once properly notified by you, we will take steps to stop using your information in this way. (3) For a list of our group companies or brands, please send us your request. Please write to Experience English Limited, Legal Department, TUI Travel House, Crawley Business Quarter, Fleming Way, Crawley, West Sussex RH10 9QL.

(e) Foreign Controls: Outside the European Economic Area (EEA), note that controls on data protection in such countries may not be as strong as the legal requirements in this country.

(f) Use of Tools/"Cookies" and Links to Other Websites: If our contact and dealing with you is via our website(s), we may use "cookies". Cookies allow us to identify your computer but not you personally. You can set your web browser to refuse cookies. However, you may not be able to enjoy all the facilities or book via our website if you do so. However, if you also receive our email marketing, we will tailor the information we send you unless you tell us not to. This means we may use information we hold and cookies to identify your individual web site search behaviour and preferences. This will enable us to send you more personalised and relevant communications. You will be given the opportunity on every communication to opt-out of this personalisation. We collect information relating to customer trends and patterns and use cookies and software tools to measure site usage and related information. If you are making a purchase, we may also use cookies to keep track of the transaction from one web page to another. Our website(s) may contain links to other sites not controlled by us. It is your responsibility to check the status of these sites.

(g) Monitoring: To ensure that we carry out your instructions accurately, improve our service and for security, we may monitor and/ or record: (1) telephone calls; (2) activities using CCTV in and around our premises; and (3) transactions and activities on our website. All recordings are and shall remain our sole property.

(h) Security Statement: We have taken all reasonable steps and have in place appropriate security measures to protect your information.

(i) Changes to this Policy: Any changes to this Policy will be either posted on our website, brochure and/or made available on request.

## HIGH SEASON SUPPLEMENTS

During peak periods when demand is high, you may find that supplements are added to the cost of your programme. The cost of these supplements will be quoted to you at the time of booking.

## TERMS FOR YOUNG LEARNERS AND MINORS (UNDER 18S)

If you are under 18 then your parent or guardian is hereby deemed to accept the terms and conditions stated above, with the exception of terms that explicitly state they are relevant to adult students only. Your parent or guardian further accepts that:

1. They will provide a signed consent form at the time of booking, specifying details of the guardian who will be required to sign you in and out of school daily (if applicable).
2. They will permit you to travel by public transport;
3. They authorise you to take part in all tourist, sporting and cultural activities associated with the course;
4. They permit you to be treated by a doctor in an emergency. Experience English Limited will use all reasonable endeavours to make contact with your parent or guardian in this event;
5. They will pay any third party fees associated with the above treatments;
6. They will provide the school with a contact telephone number in case of emergencies.

## AGENTS

All of the above terms are applicable to direct students and to agents unless prior alternative arrangements are agreed in writing between the agent and Experience English.



Experience  
English



Life  
changing  
learning

Partner details:



e: [info@experienceenglish.com](mailto:info@experienceenglish.com) t: +44 208 939 0402