



**LEADERS IN ENGLISH LANGUAGE TRAINING FOR OVER 40 YEARS**

[www.atclanguageschools.com](http://www.atclanguageschools.com)



ATLANTIC

OCEAN

## IRELAND

- ATC BRAY
- ATC DUBLIN
- ATC SUMMER CENTRES

UNIVERSITY COLLEGE DUBLIN  
BLACKROCK COLLEGE  
RATHDOWN SCHOOL  
CARYSFORT COLLEGE  
GRIFFITH COLLEGE  
MAYNOOTH UNIVERSITY  
KILKENNY COLLEGE  
UNIVERSITY OF LIMERICK



## ENGLAND

- ATC WINCHESTER SCHOOL OF ENGLISH

## OUR CENTRES

BRAY	08
DUBLIN	12
WINCHESTER	20
SUMMER COURSES	30

## CONTENTS

Welcome to ATC Language Schools	03
ATC Year Round Schools - 3 Exciting Destinations	05
Your ATC Team	06
ATC Quality Assurance	07
Studying with ATC in Ireland	16
Adult Courses ATC Bray and ATC Dublin	18
Studying with ATC in England	22
Adult Courses ATC Winchester	24
ATC Social Programme	26
ATC Junior Year Round Courses	28



## WELCOME TO ATC LANGUAGE SCHOOLS

ATC was founded in 1973 and since then we have been providing quality English language programmes for students of all ages from across the world.

We offer a wide range of courses for students of different ages and levels of English, all of which are approved in Ireland by Quality and Qualifications Ireland for English Language Teaching (ELT) and in the UK by the British Council and English UK.

Our courses, which are conducted by fully qualified teachers, have an international reputation for academic excellence. Students attending our courses can choose to live with a family or in residential accommodation.

ATC is owned and managed by three people who are passionate about delivering high quality English language programmes and

use their collective experience of over 70 years to ensure that the individual needs of each student are met.

Every aspect of a student's experience with ATC is important to us and our team is committed to providing an excellent standard of service in a friendly and professional environment.

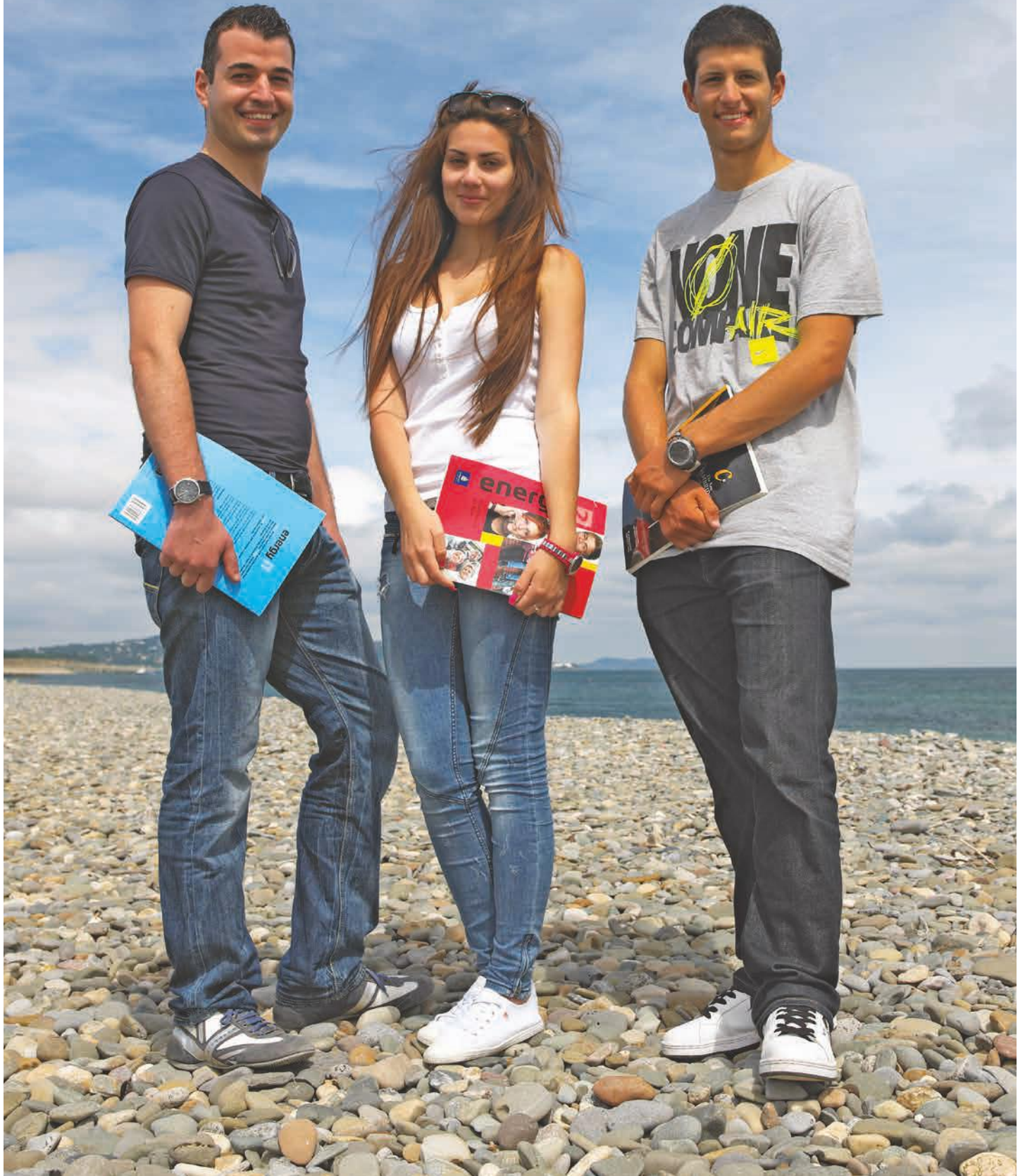
**Ugo Greevy, Ed Greevy and Colm O'Byrne**  
Directors



***We aim to help our students improve their English language skills in a friendly and stimulating atmosphere by providing an extensive educational and cultural programme, and by ensuring that their needs are clearly understood and met at all times.***

***"If you want to learn English in a friendly atmosphere you should come to ATC.  
It is easy to make friends from all over the world."***

*Fumiko, Japan*





## ATC YEAR ROUND SCHOOLS – 3 EXCITING DESTINATIONS



Bray

### BRAY

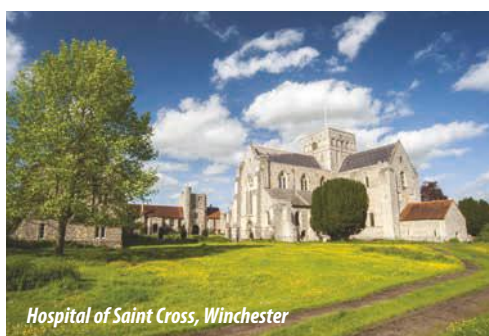
Bray is a long established seaside town located 18km south of Dublin and is well served by public transport. With its beautiful sand and shingle beach and a charming promenade there are a wide range of festivals and activities throughout the year, making it an attractive and peaceful environment to study and live in.



Ha'penny Bridge, Dublin

### DUBLIN

Dublin is one of Europe's most popular tourist destinations and is world famous for its hospitality, culture, arts, music and vibrant nightlife. Dublin is a relatively small and accessible city and has one of the youngest populations in Ireland, making it ideal for students wishing to improve their English and learn the culture of another country.



Hospital of Saint Cross, Winchester

### WINCHESTER

Winchester, the perfect English city, is a vibrant heritage destination just an hour south west of London. A city steeped in history, Winchester is England's ancient capital and former seat of King Alfred the Great. Today Winchester combines the best of city life with the freshness of the surrounding countryside and boasts a magnificent Cathedral, award-winning pubs and restaurants and a tempting array of independent shops. This culturally rich medieval city is surrounded by idyllic Hampshire villages and the fabulous rolling countryside of the South Downs National Park.



## YOUR ATC TEAM

scan here to  
meet the team



ATC Dublin Reception

### TEACHING STAFF

All our teachers are native English speakers who have a university degree and a professional qualification in English Language Teaching. Our trainers are dedicated professionals and have many years experience in teaching English to students from all over the world.

Many have lived and worked as teachers abroad and have first-hand knowledge of other cultures, customs and traditions. Our teaching staff is guided by our Directors of Studies who work closely with the teaching team in each school monitoring the progress of our students.

### ADMINISTRATIVE TEAM

All the ATC administrative team are well trained and motivated individuals. They are here to assist our students during their stay and ensure that their programme meets with their expectations.

Our administrative team also includes Accommodation Officers who will take care of the individual needs of each student, and Student Welfare Officers working with administrative support staff that organise the student social programme and help them with their day-to-day needs; from banking and student visa information, to information on places to visit during their time off.

***"I want to thank you and your school for all that you do. I knew I could rely upon your expertise and your support. Thank you!" Daria, Aerovectra, Russia***



## ATC QUALITY ASSURANCE

### ACCREDITATIONS

Our schools are members of, and accredited by, the leading associations in the international education sector. By working to such high standards we guarantee that each student will receive the individual attention needed to ensure that every part of their programme meets their specific needs.

#### ATC IRELAND ACCREDITATIONS

**ACELS** - ATC is recognised by ACELS, a service of Quality and Qualifications Ireland, for English Language Teaching (ELT).

**ALTO** (Association of Language Travel Organisations) - ATC is a member of ALTO; a platform which provides connections through networking, professional development, idea and information exchange.

**MEI** (Marketing English in Ireland) - ATC is a founder member of Marketing English in Ireland.

**Quality English** - ATC is a member of Quality English: an association of privately owned English language schools that are committed to providing high quality English courses to international students.

#### WINCHESTER SCHOOL OF ENGLISH ACCREDITATIONS

**British Council** - Winchester School of English is accredited by the British Council for the teaching of English as a foreign language. To obtain accreditation, the school must comply with strict regulations relating to school premises and facilities, teacher qualifications, teaching quality, administration and welfare.

**English UK** - Winchester School of English is a member of English UK - the Association of Recognised English Language Services - and follows the English UK Code of Practice.

**Quality English** - Winchester School of English is a member of Quality English: an association of privately owned English language schools that are committed to providing high quality English courses to international students.

**Cambridge Exam Centre** - Winchester School of English is an authorised examination centre for the Cambridge FCE, CAE and CPE exams.



**ALTO** Association of Language Travel Organisations



ENGLISHUK member





## OUR SCHOOL IN BRAY

### ATC BRAY

ATC Bray is located on the seafront in four adjacent Victorian buildings, including the beautifully restored Dunluice House, and is only 35 minutes by train from Dublin city centre.

Carefully and completely refurbished and upgraded, Dunluice House combines Victorian elegance with modern comforts.

The classrooms are bright, spacious and warm, and many have magnificent views across the Irish Sea. There is a student study centre available for students who wish to study independently using the materials available in our library. The students can use this room to do their homework or practise/ improve their skills in English. The student library contains a wide selection of both educational and recreational reading materials. Teachers are always available to assist students with their studies.

The school offers a dedicated computer area for student use and high speed wi-fi available throughout the buildings.

Our Bray school also provides a recently modernised and extended cafeteria in addition to a private garden and patio area, with ample seating for our students.

### SCHOOL INFORMATION

- ✓ Beautiful seaside location
- ✓ 23 spacious classrooms
- ✓ Library & study centre
- ✓ Multimedia rooms & student computers
- ✓ Student canteen
- ✓ Private garden and patio
- ✓ Wi-Fi throughout the building
- ✓ Free afternoon classes
- ✓ Minimum age 17

### COURSES

- ✓ General English
- ✓ Intensive English
- ✓ Exam Courses
- ✓ Individual Tuition
- ✓ Business English

***“The students and teachers are very friendly, I like the school as well because it is in front of the sea.” Charlotte, Belgium***



*"The school offers many facilities to improve your English such as the free classes and wonderful tours around Ireland. The teachers are really good and you can learn a lot with them." Graciela, Venezuela.*

scan here to  
find out more

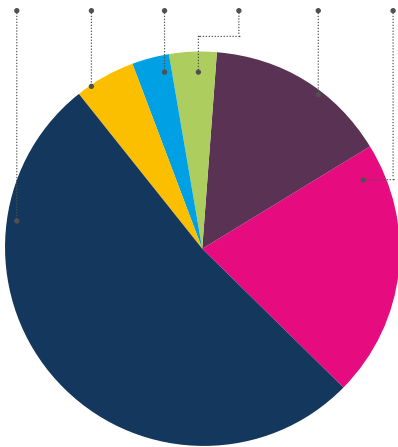


#### DISTANCE FROM ATC BRAY

- ✓ To Dublin City Centre – 18km
- ✓ To Dublin Airport – 31km
- ✓ To Kilkenny – 140km
- ✓ To the beach – 30 metres

#### NATIONALITY MIX

WESTERN EUROPE	EASTERN EUROPE	MIDDLE EAST	RUSSIA	ASIA	SOUTH AMERICA
52%	5%	3%	4%	15%	21%



ATC Bray  
Dunluce House, Strand Road, Bray, Co. Wicklow





Altona Student Apartment

## ATC BRAY – ACCOMMODATION



Marine Terrace Garden



Marine Terrace Kitchen



Altona Student Apartment



### HOST FAMILY ACCOMMODATION

Living with a host family is the ideal way to practise English outside the classroom. Our Irish host families have been selected carefully and are visited regularly by our Accommodation Officer.

### SELF CATERING ACCOMMODATION (YEAR ROUND)

ATC student apartments are located beside the school and offer students accommodation in single or twin rooms. The apartments have 2/3 bedrooms with a shared bathroom, kitchen and living room.

### ATC STUDENT RESIDENCE (YEAR ROUND)

The ATC residence is located only 700 metres from the school on the seafront and offers accommodation in single and twin en-suite rooms with shared kitchen and living rooms.

### SELF-CATERING ACCOMMODATION (SUMMER)

During the peak season ATC reserves additional accommodation for our students in apartments and houses a short distance from Dunluce House in Bray. These houses generally accommodate 5 or 6 students in twin and single room accommodation.

### ACCOMMODATION

- ✓ Dedicated Accommodation Officer
- ✓ Host family or residential accommodation
- ✓ School owned apartments
- ✓ All accommodation within walking distance
- ✓ Single or twin rooms



*Marine Terrace Bedroom*



## OUR SCHOOL IN DUBLIN

### ATC DUBLIN

ATC Dublin is located in the heart of Dublin City Centre, on South William Street, within walking distance of the city's most popular attractions and fashionable cafés, restaurants and pubs. The school itself is located in a modern building that has been completely refurbished and upgraded to provide students with the most comfortable city centre experience.

ATC Dublin has 16 bright, modern and spacious classrooms. Each classroom is equipped with modern audio and audio-visual technologies, including interactive whiteboards that enable our teachers to use the latest technology to enhance students' learning experience. We use the internet regularly in our classes giving students practical examples of how to use their language in the 21st Century.

All our classrooms have new and versatile fittings which allow us to design rooms specifically for a variety of functions, including testing and examination. A variety of classroom layouts with tables and chairs creates a perfect environment for helping you to learn English.

The 4th floor of the school is dedicated as a student relaxation and recreation space. The light filled student common area is a perfect place for our students to meet during breaks and after class, arrange their social activities or prepare their CV on one of the computers located in the common area.

### SCHOOL INFORMATION

- ✓ City centre location
- ✓ Modern refurbished building
- ✓ 170 metres from Grafton Street
- ✓ Stunning 4th floor student lounge
- ✓ Student computers
- ✓ Wi-fi throughout the building
- ✓ Free afternoon classes
- ✓ Interactive whiteboards
- ✓ Minimum age 17

### COURSES

- ✓ General English
- ✓ Intensive English
- ✓ Exam Courses
- ✓ Individual Tuition
- ✓ Business English
- ✓ Teaching Training Programme



*"It's a perfect location, in the centre with lots of places to visit nearby. The teachers are well qualified and help you with your problems." Matteo, Italy*

scan here to  
find out more

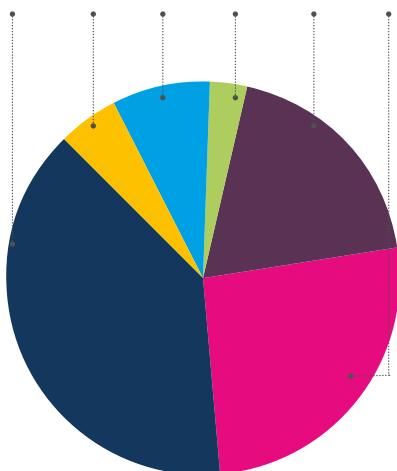


## DISTANCE FROM ATC DUBLIN

- ✓ To Dublin Airport – 14km
- ✓ To ATC Bray – 18km
- ✓ To Cliffs of Moher – 267km
- ✓ To Belfast – 166km

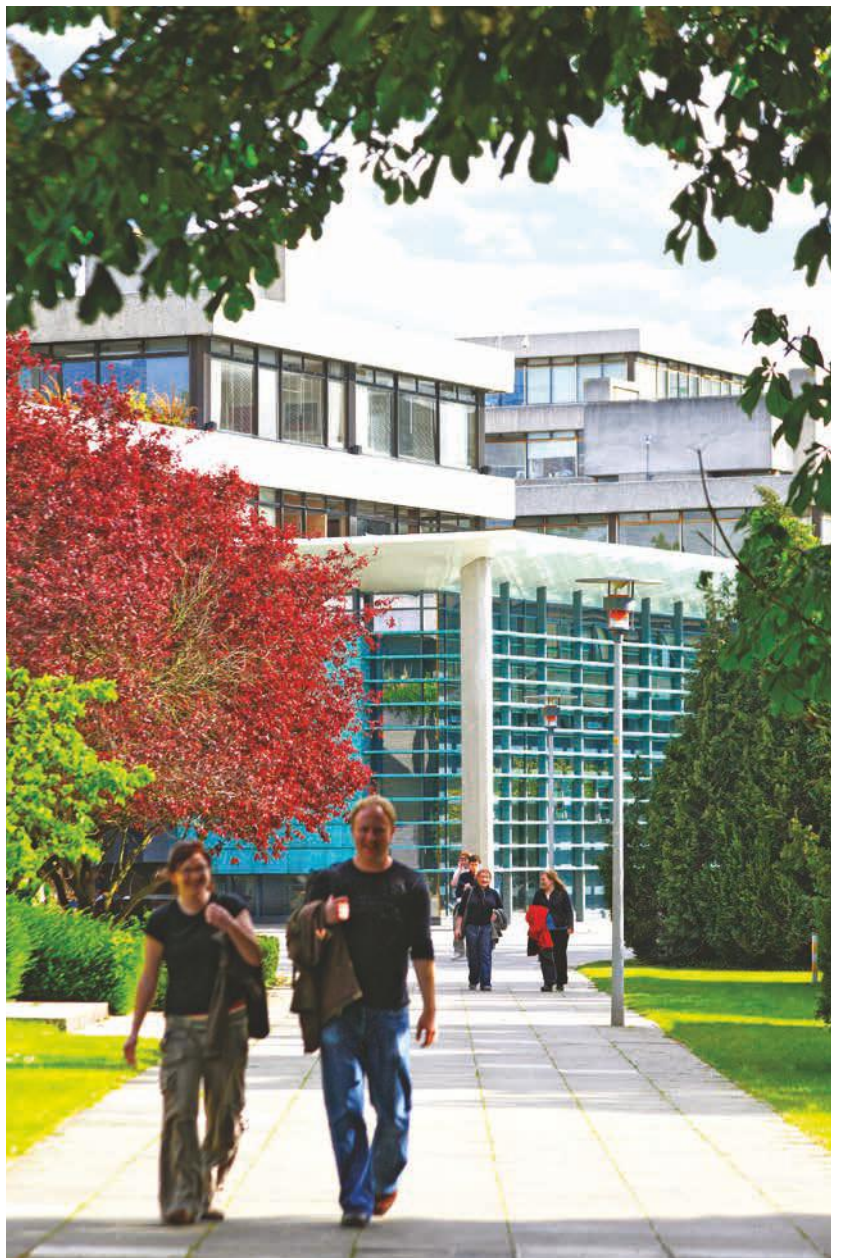
## NATIONALITY MIX –

WESTERN EUROPE	EASTERN EUROPE	MIDDLE EAST	RUSSIA	ASIA	SOUTH AMERICA
39%	5%	8%	3%	19%	26%





## ATC DUBLIN – ACCOMMODATION





Dublin City Apartment

*"I lived with an Irish family and other students from Italy and Brazil. It was fabulous. The best time was eating delicious dinner and telling our daily life to our Irish mam. They also gave me a chance to improve my English and we learned from each other. We were like a true family in the end." Hinako, Japan*

### HOST FAMILY ACCOMMODATION

Students attending our Dublin city centre school can stay with Irish host families, located in nice, leafy suburbs, close to good public transport. Students travel to and from school by bus, DART (train), or LUAS (tram). Host families for adult students offer single or twin rooms with half-board during the week and full-board at weekends.

### SELF CATERING ACCOMMODATION (YEAR ROUND)

Located within walking distance of the school, the ATC student apartments offer accommodation in single or twin rooms on a self-catering basis. The apartments have between 3 and 6 bedrooms with shared or en-suite bathrooms, a shared kitchen and living room.

### RESIDENTIAL ACCOMMODATION (SUMMER) UNIVERSITY COLLEGE DUBLIN, UCD

ATC offers single en-suite accommodation on campus in UCD. These modern apartments are offered on self catering basis with a shared kitchen and living room. UCD is perfectly located only 4km from Dublin city centre, and with a bus terminus on campus the school on South William Street can be reached in only 15 minutes.

### ACCOMMODATION

- ✓ Dedicated Accommodation Officer
- ✓ Host family or residential accommodation
- ✓ Carefully selected host families
- ✓ School managed apartments
- ✓ Single or twin rooms



Dublin City Apartment



## STUDYING WITH ATC IN IRELAND



### COURSE CURRICULUM

Our curriculum is based on the CEFR (Common European Framework of Reference for Languages), and focuses very much on student-centred learning. Our teachers use methodologies such as CLT (Communicative Language Teaching), TBL (Task-Based Learning), and CLL (Co-operative Language Learning).

### TESTING

On the first day of school, students are given a placement test which includes a written and oral needs analysis. They are then placed in a class appropriate to their ability and needs.

### CLASS PLACEMENT

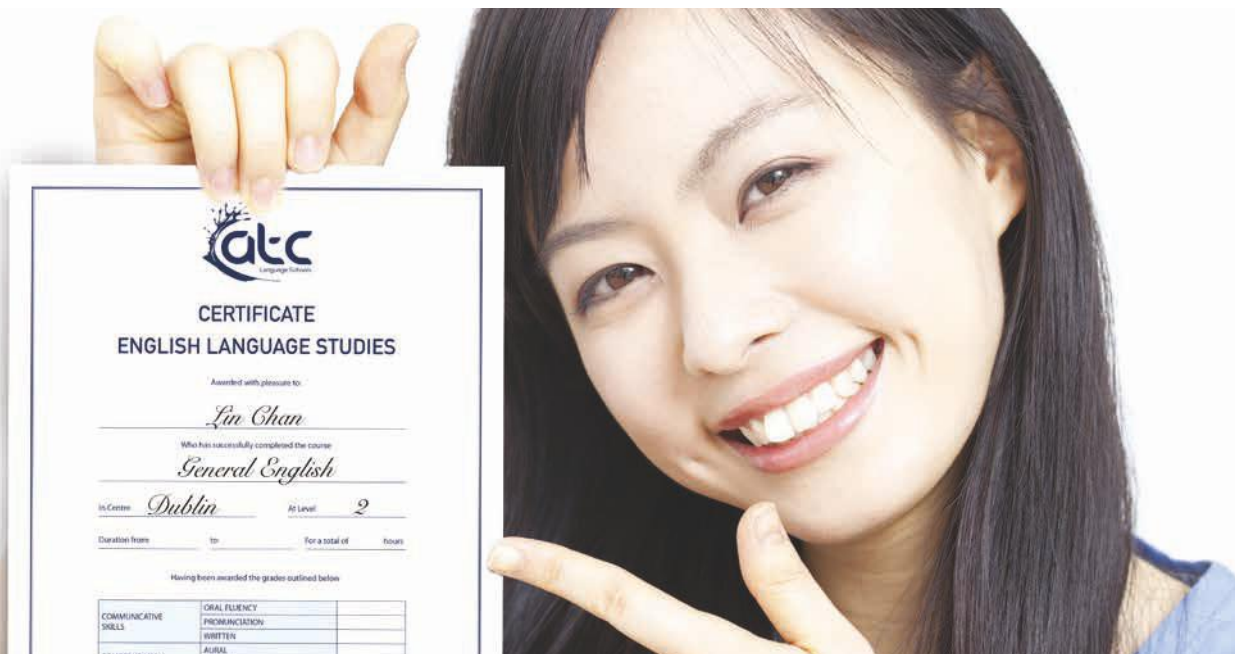
Each lesson is 60 minutes. Classes are available at all levels year round. ATC classes hold a maximum of 15 students, but you can expect an average of 8 to 12 students in class at most times of the year.

### PROGRESS

Progress tests are done in class on a regular basis and in negotiation with teachers and the Director of Studies. ATC aims to see students improving at a rate of one level per 80-120 hours, although learners may differ in this; it may take one student 4 weeks, another student 8 weeks to improve.

### CERTIFICATION

All students receive a certificate of attendance on completion of the course, which includes a short didactic report. All reports include the number of hours studied, which may be used for credits on return to educational establishments at home.



*"I really like the variety in the classes, we are involved in different things like teamwork, grammar exercises, games, progression tests every Friday, so that's what makes it interesting." Juliet, Germany*

TIMETABLE					
TIME	MONDAY	TUESDAY	WEDNESDAY	THURSDAY	FRIDAY
09.00-11.00	GENERAL ENGLISH - MORNING COURSE (GE20)				
	CAMBRIDGE EXAM COURSE (FCE / CAE)				
11.00-11.30	COFFEE BREAK				
11.30-13.30	GENERAL ENGLISH - MORNING COURSE (GE20)				
	CAMBRIDGE EXAM COURSE (FCE / CAE)				
LUNCH BREAK					
13.45-17.00	GENERAL ENGLISH – AFTERNOON COURSE – ATC DUBLIN ONLY (GE15)				
14.00-17.00	ONE TO ONE TUITION AVAILABLE				
14.15-17.15		INTENSIVE LESSONS (IE26)		INTENSIVE LESSONS (IE26)	
		IELTS CLASSES (IELTS)		IELTS CLASSES (IELTS)	
14.30-16.00	FREE CLASSES		FREE CLASSES		FREE CLASSES

Please note that during summer months some classes may begin at 08.30. Both of our schools in Bray and Dublin offer free classes for our students 3 afternoons per week. These classes are an ideal way to practise and reinforce what they have learned in a relaxed and informal setting.

#### FREE AFTERNOON CLASSES

<b>Monday</b> Speaking & Listening	Students can develop their speaking and listening skills in these fun and interactive lessons. Here, students get the opportunity to improve their understanding of standard speech on familiar topics in work, school, leisure and many more areas. Teachers will use YouTube clips, radio broadcasts and a variety of other media to focus on a broad range of topics used in everyday life.
<b>Wednesday</b> Business English	Students will cover a range of subjects, from writing business e-mails and reports to planning and giving presentations. Tasks and homework are set each week to ensure progression throughout the course. Students are exposed to new and complex vocabulary that is commonly used in various work situations, and they are taught how to gauge the tone and register of their written communication.
<b>Friday</b> Pronunciation	Students can focus on understanding and pronouncing different sounds. In this interactive class students can develop their pronunciation skills. Topics include: Vowels & Consonants, Syllables, Word and Sentence structure, Intonation, Sentence Stress, Past Tense and Sounds of The Alphabet.



## ADULT COURSES ATC BRAY AND ATC DUBLIN

**Students can choose from a comprehensive range of English language courses including General English, Business English, Teacher Training Programmes and Examination Courses including Cambridge, IELTS and TOEIC. Our General and Intensive English classes are available year round with courses commencing each Monday.**



### **GENERAL ENGLISH – GE20 AND GE15**

The General English syllabus is 20 hours (20 x 60 minutes) per week and is designed to improve the students' understanding of the four skills of listening, speaking, reading and writing. All levels from elementary to advanced are catered for throughout the year. An option of 15 hours per week is available with afternoon lessons in Dublin.



### **INTENSIVE ENGLISH – IE26**

The Intensive English course syllabus is based on the need for accuracy in spoken English. The Intensive English course is 26 hours per week, and includes the General English programme (20 hours) and a further 6 hours per week taken over two afternoons with a focus on discourse structure and oral fluency. Students may request areas of improvement in negotiation with the teacher and other students. All levels from elementary to advanced are catered for throughout the year.



### **EXAM COURSES – FCE, CAE & IELTS**

Students can study and prepare for a range of internationally recognised English language exams including IELTS, Cambridge FCE & CAE, TOEIC, TIE, Trinity ESOL and others. ATC Bray and ATC Dublin are authorised ETS examination centres, providing on-site TOEIC examinations. Minimum English levels and specific course dates apply.



ATC Bray Classroom

*"Since I arrived I have met a lot of people from all over the world. I have learned things that I could not imagine about their countries. Of my teachers; they are excellent, all the classes are interactive and funny." Roberto, Mexico.*



### INDIVIDUAL TUITION – ONE TO ONE

Individual tuition is a 'tailor-made' programme designed specifically to meet the needs of the particular student. This is ideal for a student wishing to concentrate on a particular aspect of work. The amount of individual hours in addition to the general course depends on the individual student's needs.



### TEACHER TRAINING – TT

We offer courses for primary school teachers, secondary school teachers and teachers of adults. The programme includes English language skills development, new methods in language training and practical techniques in teaching over 2 weeks including cultural excursions. Upon request we can tailor a training course to suit a group's specific needs from a choice of modules including Task Based Learning (TBL), Pronunciation and Content and Language Integrated Learning (CLIL). Funding can be applied for in connection with the Erasmus+ programme.



### GENERAL ENGLISH & BUSINESS COMBINATION – GEBC

This course combines the General English course of 20 hour per week with individual tuition focusing on Business English elements, topics covered may include interview skills and language for meetings.



## OUR SCHOOL IN WINCHESTER

### WINCHESTER SCHOOL OF ENGLISH

Winchester School of English was founded in 1989 and is a small and friendly school where students learn in a relaxed environment. ATC Language Schools acquired the school in August 2013 and is continuing to ensure that the strong ethos and philosophy of the school continues long into the future.

Winchester School of English is a school which cares about its students. We limit the number of students in the school to 40 in order to guarantee a friendly working atmosphere in which students are able to progress as quickly as possible.

The school is situated about a 10 minute walk from the main shopping area of Winchester, in a mainly residential area. It is also a conservation area as many of the houses are considered to be historically important. The school building is 100 years old and before it became a school it was a family home. It still has a strong family feel – the kitchen, as in most homes, is the focal point of school life! Just like at home, you can help yourself to tea and coffee – and it's free!

### CAMBRIDGE EXAMINATION CENTRE

Winchester School of English is an examination centre for Cambridge FCE, CAE and CPE exams. Students can prepare for and take these internationally recognised exams with us in the same location.

### SCHOOL INFORMATION

- ✓ Committed, hard-working teachers
- ✓ Small school: maximum 40 students
- ✓ Very small classes: maximum 8 students through the year, 10 students in summer
- ✓ Friendly, supportive atmosphere
- ✓ Lots of personal attention for every student
- ✓ Minimum age 18
- ✓ Speak English ONLY rule
- ✓ Accredited by the British Council
- ✓ Cambridge Examination Centre

### COURSES

- ✓ Intensive General English
- ✓ Examination Preparation FCE, CAE, IELTS
- ✓ One-to-One English For Business
- ✓ One-to-One General English
- ✓ Combination Courses:  
General English classes + One-to-One



*"Winchester is well placed, 1 hour from London, 20 minutes from the sea. It is cosmopolitan and the people are open-minded and ready to speak English with students."* Gaspard, France



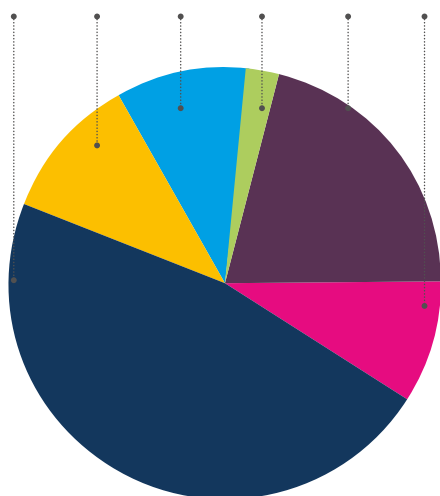
scan here to  
find out more

## DISTANCE FROM ATC SCHOOL IN WINCHESTER

- ✓ To London Heathrow Airport – 70 minute transfer
- ✓ To London Waterloo – 55 minutes by train
- ✓ To Oxford – 70 minutes by bus/taxi
- ✓ To Bournemouth – 45 minutes by bus/taxi
- ✓ To University of Winchester – 20 minutes on foot

## NATIONALITY MIX

WESTERN EUROPE	EASTERN EUROPE	MIDDLE EAST	RUSSIA	ASIA	SOUTH AMERICA
46%	13%	12%	6%	15%	8%



THE UNIVERSITY OF WINCHESTER

Winchester School of English  
Beaufort House, 49 Hyde Street, Winchester, Hampshire, SO23 7DX





## STUDYING WITH ATC IN ENGLAND



### THE TEACHING

All our teachers are educated to at least degree level and are experienced in, and have an accredited qualification in, English Language Teaching, ELT. Our academic team all believe that the key to successful language learning is the atmosphere and co-operation and encouragement we create not only in the classrooms but in the whole school. Our teaching staff are guided by our Principal who works closely with the teaching team, monitoring the progress of our students.

### OUR STUDENTS

All our students are adults and we maintain an average age of approximately 25-30 years in our student population. Since our school opened in 1989 we have welcomed students from more than 60 countries to study in Winchester. All our students have benefited from the small class sizes, with an average of 6 students per class ensuring a high level of personal attention. We protect the nationality mix in the school at all times and limit the maximum number of students from any one nationality.

During the summer months of July and August we also reserve additional classrooms in The University of Winchester, ideal for students looking for an independent studying experience to match with our summer accommodation on the campus.



## ACCOMMODATION IN WINCHESTER

### HOMESTAY ACCOMMODATION

An important part of your course is the opportunity to get to know English people and the English way of life and so we recommend that you stay with one of our local homestay providers, all of whom live in Winchester, either within walking distance, (5-25 minutes), or a short bus ride from the school.

### CAREFULLY CHOSEN FOR YOU

Our team take great care to ensure your accommodation is of a high standard, where you will be happy and comfortable. We meet all of the providers and inspect the accommodation before selection. Your homestay provider offers dinner, bed and breakfast Monday to Friday with full board at the weekends.

### SELF CATERING & SUMMER ACCOMMODATION

While we recommend staying with a homestay provider as part of your English language experience, it is possible for us to arrange self-catering residential accommodation at The University of Winchester during the summer or hotel accommodation year round, subject to availability.

***"I've made lots of friends from Germany, Spain, Italy, Hungary, Czech Republic and Brazil. It's been a fabulous experience to spend time together and know their country which is totally different from my country." Soyeong, Korea***

### ACCOMMODATION

- ✓ Homestay accommodation
- ✓ Self-catering residential accommodation
- ✓ Most accommodation options within walking distance
- ✓ Single or double rooms





## ADULT COURSES ATC WINCHESTER



### **INTENSIVE GENERAL ENGLISH**

A course of 30 hours per week, including 7 ½ hours optional self study, which is designed for motivated adult students who want to work hard in small classes and to progress quickly and with confidence. This course has a maximum of 8 students per class from September to June and up to 10 students during July and August.

### **ENGLISH FOR BUSINESS – COMBINATION OR ONE TO ONE**

This allows students to benefit from studying General English in a small class during the morning and then to concentrate on their own specific requirements with One-to-One lessons in the afternoon.

### **IELTS EXAM PREPARATION**

These 4 week courses aim to develop students' listening, reading, writing and speaking abilities and to give students practice in the skills they need to take the IELTS exam.

The Intensive General English classes take place in the morning and exam skills development and practice takes place in the afternoons.



*“Winchester has a good balance of nationalities and we must speak only in English when we are at school. For that reason my English has improved very quickly.” Ali, Qatar*

**Students can choose optional lessons through the week to focus on different areas such as pronunciation or British life and culture**

INTENSIVE GENERAL ENGLISH CLASSES TIMETABLE					
TIME	MONDAY	TUESDAY	WEDNESDAY	THURSDAY	FRIDAY
09.30 - 10.45	News Vocabulary	Grammar	Student Newspaper Article	Grammar Extension Practice	Weekly Progress Test and Check
10:45 - 11:00	COFFEE BREAK				
11:00 - 12:15	News, Listening & Language Focus	Reading Skills	Grammar Extension	Vocabulary Extension	Options: British Life & Culture
12:15 - 13:30	LUNCH BREAK				
13:30 - 14:30	Skills Options e.g. Pronunciation	Writing Skills	Private Study and One-to-One Tutorials	Listening / Video	Student Talks & Feedback
14:30 - 14:45	TEA BREAK				
14:45 - 15:45	Skills Options e.g. Pronunciation	Communication Activity	Private Study and One-to-One Tutorials	Speaking Skills	Student Talks & Feedback

### CAMBRIDGE EXAMINATION PREPARATION

These courses combine General English with practice in the specific exercises and techniques needed for the FCE and CAE exams; CPE preparation can be provided on request. The Cambridge exams test your ability in reading, writing, speaking and listening and are internationally recognised.

Winchester School of English is an authorised Cambridge examination centre, this means that students can prepare for and take the exams in the same relaxing environment.



## ATC SOCIAL PROGRAMME

scan here to  
find out more





***"They offer a social program that includes tours and travel tips by region, which helps in the integration between students and the whole thing of 'absorbing culture' that is important in a language course!" Gabriela, Brazil***

A comprehensive social and cultural programme is provided in each of our 3 adult schools. Each programme is tailored to the destination you choose and we encourage all students to participate fully in the wide range of free and fee paying activities. At ATC we believe that the programme of cultural visits and activities forms an important part of a student's stay with us. It affords the students an opportunity to explore the destination country, meet the locals, and discover a new culture while also practising their English with their new international friends.

To keep updated with our social programme why not like our Facebook pages:

ATC Bray & Dublin –

<https://www.facebook.com/pages/ATC-Language-Schools/284073324750>

ATC Winchester –

<https://www.facebook.com/pages/Winchester-School-Of-English/148115028562767?fref=ts>



#### **SOME OF THE ACTIVITIES AND TRIPS THAT WE ORGANISE ARE:**

- ✓ An orientation tour on your first day
- ✓ Afternoon trips
- ✓ Evening activities
- ✓ Full-day excursions





## ATC JUNIOR YEAR ROUND COURSES

scan here to  
find out more



### ATC YEAR ROUND JUNIOR PROGRAMMES

At ATC we provide short-stay programmes for groups year-round as well as an extensive range of summer courses. During the academic year, groups generally stay for 1 or 2 weeks but we can also provide programmes up to 4 weeks for closed groups during this period.

The junior curriculum is based on the Common European Framework of Reference for Languages and aims to develop students' communicative abilities in English and to broaden their understanding of Irish culture.

This programme is available to groups from September to June in both of our schools in Bray or Dublin. Junior students are provided with bed and breakfast, packed lunch and an evening meal each day of their stay and they live as part of the family they are allocated to.

Tuition generally takes place in the mornings and can be 15-20 hours depending on the groups' needs. The lessons emphasise culture and conversation through project work and the language work focuses on oral and aural skills.

We have a dedicated junior programme manager in both our Bray and Dublin schools. They work closely with groups in advance of their arrival to ensure that a comprehensive social and cultural programme is in place for them once they arrive at ATC.

It is our aim that groups receive a highly personalised academic and cultural programme to meet their specific needs. We encourage all leaders and teachers to work with our academic and programme managers in advance in order to maximise their experience and time in Ireland.

### ATC BRAY

- ✓ Seaside location
- ✓ Accommodation within walking distance
- ✓ Tailor made programme
- ✓ Dedicated Accommodation Officer
- ✓ Dedicated Programme Manager on site

### ATC DUBLIN

- ✓ City centre location
- ✓ Accommodation in suburban area of Dublin close to transport system
- ✓ Tailor made programme
- ✓ Dedicated Accommodation Officer
- ✓ Dedicated Programme Manager on site



*"We had incredible weather and the kids were very happy with the families, teachers and outings. Everything was perfect!" Joseph, Group Leader from Spain*

## SAMPLE TIMETABLE

	SUNDAY	MONDAY	TUESDAY	WEDNESDAY	THURSDAY	FRIDAY	SATURDAY	
MORNING 09.00 - 12.30	Arrival - Private transfer from Dublin Airport to Meeting point - To meet host families.	Lessons 09:00- 10:30	Lessons 09:00- 10:30	Lessons 09:00- 10:30	Lessons 09:00- 10:30	Lessons 09:00- 10:30	Departure - Private transfer from meeting point to Dublin Airport	
		BREAK						
		Lessons 11:00 - 12:30	Lessons 11:00 - 12:30	Lessons 11:00 - 12:30	Lessons 11:00 - 12:30	Lessons 11:00 - 12:30		
		LUNCH						
AFTERNOON 13.30 - 17.30		Orientation Tour of Dublin with ATC Guides. Meet @ reception @ 13.30	Guinness Storehouse @ 14.30 with Group Leaders. Meet @ reception @13.30	James Joyce Centre with Group Leaders. Meet @ reception @13.15	Book of Kells with Group Leaders. Meet@ reception @13.30/ Scavenger Hunt 15:00/16.30	St. Patrick's Cathedral with Group Leaders@14:00. Meet @ reception @ 13.30		
		DINNER						
EVENING 20.00 - 22.00	Optional Activities		Cinema		Bowling			

**We can offer a standard programme or a tailor-made itinerary designed to meet the requirements of your specific group.**



## DISTANCE FROM DUBLIN TO ATC IRELAND SUMMER PROGRAMMES

- ✓ University College Dublin, UCD – 4km
- ✓ Blackrock College – 7km
- ✓ Rathdown School – 13km
- ✓ Carysfort College – 7km
- ✓ Griffith College – 2km
- ✓ Maynooth University – 24km
- ✓ Kilkenny College – 128km
- ✓ University of Limerick – 190km





### DISTANCE FROM WINCHESTER SCHOOL

- ✓ Brighton – 121km
- ✓ Bristol – 142 km
- ✓ Bournemouth – 66km
- ✓ Cambridge – 199km
- ✓ Eastbourne – 154km
- ✓ London – 109km
- ✓ Oxford – 87km



## ATC SUMMER – JUNIORS AND YOUNG ADULTS

scan here to  
find out more



ATC is one of Ireland's leading providers of English language teaching for juniors, with 7 summer centres in Dublin and around Ireland, all of which have been selected for their excellent facilities and safe environments. The syllabus has been carefully designed in accordance with the Common European Framework of Reference for Languages.

Students aged from 9-17 can study English for 2, 3, or 4 weeks in centres in 7 locations around Ireland. Classes are scheduled for 15/20 hours per week, with a maximum of 15 students in each class. All our teachers are native speakers, are qualified to university level, hold a TEFL (Teaching English as a Foreign Language) qualification and are highly experienced. The timetable is organised to allow each student to gain the maximum benefit from their course. In addition to the classes, a full range of sports, recreational and cultural activities are provided.

ATC offers summer school students the option of residential or host family accommodation. Many of our summer school centres provide students with single-room en-suite accommodation. At ATC we believe that learning English should be fun; all our courses therefore are designed to combine effective language learning with a busy activities programme in a fun environment.

**ATC offers a dedicated programme for individuals with an Irish staff member allocated to each 15 individual students as their 'Group Leader'.**

### ATC SUMMER COURSES

- ✓ 7 centres in Dublin and around Ireland
- ✓ Courses for juniors from 9-17 years
- ✓ Choice of host family or residential accommodation
- ✓ Highly qualified native speaking teachers
- ✓ 15/20 hours tuition per week
- ✓ International classes
- ✓ End of course certificate and progress report
- ✓ Organised sports & recreational activities daily
- ✓ Half-day excursions each week
- ✓ 1 full-day trip per week
- ✓ Full evening activity programme
- ✓ ATC Residential staff available 24/7
- ✓ Dedicated ATC staff member for every 15 individual students
- ✓ Ongoing assistance from ATC Management 24/7



## GRIFFITH COLLEGE, DUBLIN

Standard residential accommodation

2ND JULY TO 28TH AUGUST 2016

GROUPS: AGE 16-21 YEARS

INDIVIDUALS: AGE 17-21 YEARS



## ATC Language Schools

Young Adult Programme

### STANDARD PROGRAMME INCLUDES:

- ✓ Full board accommodation in twin rooms with shared bathrooms
- ✓ 20 hours General English per week (60 minute lessons)
- ✓ International classes
- ✓ Use of textbooks and other learning materials
- ✓ Graded certificate and end of course report

### OPTIONAL DUBLIN EXPLORER:

Why not pre book our activity and excursion package of –

- 4 half-day cultural visits per week with entrance fee
  - 1 full day excursion by coach per week with entrance fee
  - LEAP card (transport ticket for bus, train and tram)
  - Evening programme including discos, films, karaoke, film nights and other activities
- (Additional supplement applies)

Dublin Explorer is only optional for individual students.  
Groups must book full programme.



## UNIVERSITY COLLEGE DUBLIN (UCD)

En-suite residential accommodation

29TH JUNE TO 21ST AUGUST 2016

AGE: 11 - 17 YEARS

GROUPS & INDIVIDUALS

### STANDARD PROGRAMME INCLUDES:

- ✓ Glenomena / Roebuck residence – en-suite accommodation, single rooms in 6 bedded apartments with shared living area
- ✓ 15 hours of English language tuition per week
- ✓ Alternate weekly morning and afternoon classes
- ✓ Use of textbooks and other learning materials
- ✓ Graded certificate and end of course report
- ✓ Comprehensive sports options including Olympic size swimming pool once per week
- ✓ One half-day cultural visit per week including entrance fee
- ✓ Three cultural half-days over two weeks exploring Dublin with ATC staff using the LEAP card
- ✓ One full-day excursion by coach per week with entrance fee
- ✓ Evening programme including discos, films, karaoke, Irish night and other activities
- ✓ LEAP Card (transport ticket for bus, train and tram)





## MAYNOOTH UNIVERSITY

En-suite residential accommodation

29TH JUNE TO 31ST JULY 2016

AGE: 11 - 17 YEARS

GROUPS & INDIVIDUALS



### STANDARD PROGRAMME INCLUDES:

- ✓ River apartments – en-suite accommodation, single and twin rooms in 5 and 6 bedded apartments with shared living area
- ✓ 15 hours of English language tuition
- ✓ Alternate weekly morning and afternoon classes
- ✓ Use of textbook and other learning materials
- ✓ Graded certificate and end of course report
- ✓ Organised sports activities
- ✓ Three half-day cultural visits by coach per 2 week stay with entrance fee
- ✓ Three Dublin City transfers by coach per 2 week stay
- ✓ One dinner out in a local Irish pub
- ✓ One full-day excursion by coach per week with entrance fee
- ✓ Evening programme including discos, films, karaoke, Irish night and other activities

### OPTIONAL EXTRA:

English & Soccer (with UEFA qualified Coaches)

Or

English & Drama

- 5 afternoons over 2 weeks
- 3 hours per afternoon
- (Additional supplement applies)



## RATHDOWN SCHOOL

Integration Programme

Standard residential and Host Family accommodation

29TH JUNE TO 31ST JULY 2016

AGE: 9 - 14 YEARS

GROUPS & INDIVIDUALS

### STANDARD PROGRAMME INCLUDES:

- ✓ Residential: Full board accommodation in up to 8 bedded rooms
- ✓ Host Family: Full board accommodation with a carefully selected family (packed lunch Monday to Friday)
- ✓ Two students of same group per family
- ✓ 15 hours of English language tuition per week
- ✓ Use of textbooks and other learning materials
- ✓ Graded certificate and end of course report
- ✓ One half-day cultural visit per week with entrance fee
- ✓ One full-day excursion by coach per week with entrance fee
- ✓ Evening programme including discos, films, karaoke and Irish night
- ✓ All students have integration with Irish students four afternoons per week through Arts & Crafts, Cookery and sports activities





## BLACKROCK COLLEGE

Standard residential: 11 - 15 years

Hotel & Host Family accommodation: 12 - 17 years

29TH JUNE TO 14TH AUGUST 2016

AGE: 11 - 17 YEARS

GROUPS & INDIVIDUALS



### STANDARD PROGRAMME INCLUDES:

- ✓ Host Family: Full board accommodation with a carefully selected family (packed lunch Monday to Friday)
- ✓ Two students of same group per family
- ✓ Residential: Full board accommodation (2-5 bedded rooms and 1 multi-bedded dormitory)
- ✓ 15 hours of English language tuition per week
- ✓ Alternate weekly morning and afternoon classes
- ✓ Use of textbooks and other learning materials
- ✓ Graded certificate and end of course report
- ✓ Organised sport activities
- ✓ Three half-day activities per week with activities including Arts & Crafts and Cookery
- ✓ Two half-day excursions by coach per week with entrance fee
- ✓ One full-day excursion by coach per week with entrance fee
- ✓ Residential evening programme: includes discos, film, Irish night & other activities. Host family: Two discos per week

**Travel passes must be purchased by all students and group leaders in host families**



## KILKENNY COLLEGE

Standard residential accommodation  
Host Family option for combined groups only

29TH JUNE TO 31ST JULY 2016

AGE: 11 - 15 YEARS

GROUPS ONLY

### STANDARD PROGRAMME INCLUDES:

- ✓ Residential: Full board accommodation in multi-bedded rooms
- ✓ Host family: Full board accommodation with a carefully selected family (hot lunch in college Monday to Friday)
- ✓ Two students of same group per family
- ✓ 15 hours of English language tuition
- ✓ Alternate weekly morning and afternoon classes
- ✓ Use of textbook and other learning materials
- ✓ Graded certificate and end of course report
- ✓ Organised sports activities
- ✓ Two half-day excursions per week with entrance fee and transport
- ✓ Three Arts & Crafts / Cookery or Tennis classes per week
- ✓ One full-day excursion by coach per week with entrance fee
- ✓ Evening programme including discos, films, karaoke, Irish night and other activities





## UNIVERSITY OF LIMERICK

En-suite residential accommodation

29TH JUNE TO 31ST JULY 2016

AGE: 11 - 17 YEARS

GROUPS ONLY



### INTENSIVE ENGLISH PROGRAMME INCLUDES:

- ✓ Full board accommodation in single en-suite rooms
- ✓ 20 hours of English language tuition per week
- ✓ Alternate weekly morning and afternoon classes
- ✓ Use of textbooks and other learning materials
- ✓ Graded certificate and end of course report
- ✓ Organised sports activities
- ✓ Two half-day excursions by coach per week with entrance fee including –  
Cliff of Moher  
Thomond Park
- ✓ Three full-day excursions by coach per 2 week stay with entrance fee including –  
Blarney Castle & Cork  
Galway City & Connemara  
Dublin City with late return
- ✓ Evening programme including discos, films, karaoke, Irish night and other activities



## FLIGHTS

Students from all over the world can easily reach Dublin directly from many major international hubs including Abu Dhabi, Amsterdam, Brussels, Copenhagen, Dubai, Frankfurt, Istanbul, Lisbon, Madrid, New York, Rome, Vienna, Washington and Zurich, as well as, of course, through London, which also serves Winchester School of English.

***"So when someone asks me how's your experience with ATC, I don't know from where to start and at what point I should stop, it simply was one of the best memories in my life!"***

*Taher, Libya*



## VISA

Students attending ATC Language Schools courses from EU countries do not need a visa to enter Ireland or England. Students from non-EU countries may need a visa to enter either country and should check with their nearest Irish or British Embassy / Consulate.

## AIRPORT TRANSFERS

An airport transfer can be arranged only when flight information is received in writing by ATC Language Schools at least 10 days prior to arrival.

## INSURANCE

Before travelling, all students participating in ATC Language Schools programmes must arrange their own insurance against all expenses that might arise due to accident, illness or loss of personal effects and money.

## SCHOOL HOLIDAYS

All 3 ATC Language Schools close for 1 week at Christmas and close for all national holidays. For full details and dates see the agent manual.



**Bray** **Dublin** **Winchester**

---

---

**BRAY SCHOOL / HEAD OFFICE**

Dunluice House  
Strand Road  
Bray  
Co. Wicklow  
A98 C627  
Ireland

**DUBLIN SCHOOL**

34-35 South William Street  
Dublin 2  
D02 T205  
Ireland

**T** +353 1 284 5512

**F** +353 1 280 7525

**E** [info@atcireland.ie](mailto:info@atcireland.ie)

**WINCHESTER SCHOOL OF ENGLISH**

Beaufort House  
49 Hyde Street  
Winchester  
Hampshire  
SO23 7DX  
United Kingdom

**T** +44 1962 851844

**E** [info@winchester-english.co.uk](mailto:info@winchester-english.co.uk)



**ENGLISHUK**  
member



Accredited by the



Association of  
Language Travel  
Organisations



---

**atclanguageschools.com**

---