



Stafford House
School of English

hello FUTURE

Excellence in English

London | Brighton | Canterbury | Boston



Welcome to Stafford House School of English

Established in 1952, Stafford House School of English has built an outstanding reputation of excellence in English language.

Contents

Choose Stafford House	
Personal service	4 - 5
Excellent teaching	6 - 7
Premium facilities	8 - 9
Flexible learning	10 - 11
Accommodation	12 - 13
Inspiring activities	14 - 15
Hello students	16 - 17
Choose your school	
Hello London	18 - 21
Hello Brighton	22 - 25
Hello Canterbury	26 - 29
Hello Boston	30 - 33
Choose your course	
Which course for you?	34
General English	34
Sample module classes	35
Sample timetables	35
Exam Preparation	36
Business English	38
One-to-One English	38
Adult Groups	38
Courses for Juniors	39

Personal service

From the moment you arrive, until the day you leave us, we make it our job to ensure your stay is as smooth, comfortable and enjoyable as possible.

A warm welcome

Our friendly reception staff are the first people you see when you walk through the door – warm and welcoming, you'll immediately feel at home.

On your first day, it will take you very little time to settle in. We have a full induction schedule that will help you make the most of your studies;

- A tour of the school and introduction to the staff
- A functional walking tour of the local area
- Help on how to register with the police and a doctor
- Help on how to open a bank account
- Help with finding your nearest religious or cultural organisations
- Our specially designed student handbooks will also be a very useful reference throughout your stay

There for you

We will be happy to guide you through everything you need to know and do from the moment you enquire until you move onto the next stage of your life.

- Visa application and renewal help
- Airport transfers
- Expert education advice for further study
- Monthly meetings with academic staff to discuss your progress



Excellent teaching

Everyone needs inspiring teachers, and at each of our centres you'll find highly experienced staff bringing the English language to life. Passionate about teaching, they make lessons interactive, relevant and fun.

Total support

Across the whole of your study plan, your teachers are there for you, encouraging your development and giving you feedback. You'll also get to take advantage of a monthly tutorial with a senior member of the academic team who will talk to you about your progress and happiness, one-to-one.

Lessons that are relevant

If you're engaged in your learning, you'll learn more, faster. That's why all our teachers make lessons relevant, interactive and most importantly fun. We want you to be energised and inspired so that you reach your academic goals and achieve your potential.

Highly qualified staff

All Stafford House teachers have plenty of teaching and life experience to bring to the classroom. In fact, a high proportion of our full time staff are Diploma qualified* - the highest qualification you can achieve!

Size matters

Small classes, averaging 10 (and never more than 14), ensures your voice is heard whatever the topic and offers a relaxed environment for your English language confidence to grow.



*20 out of 40 (50%) teachers were Diploma qualified as of 1st September 2014.



Premium facilities

At every school you'll find facilities that have been designed to ensure you get the most out of your learning - bright, fresh classrooms, providing inspiring study environments.

State-of-the-art technology



You will benefit from the latest technology including interactive whiteboards, bringing the internet, HD video and social networking into your lessons.

Fresh bright classrooms



All of our schools have been recently renovated ensuring you study in bright, light and airy classrooms perfectly designed for learning and group interaction.

Free high speed Wi-Fi



Available all over our schools and in our IT suites, our free, fast Wi-Fi allows you to stay connected with those at home, study online or to just browse the internet in your free time.

Student lounges and cafés



Offering a place to chill, you can take a break from your studies or catch up with friends in the comfort of our vibrant student lounges and cafés.

Library facilities



Use this extra study resource to reinforce your classroom learning.

Self-study areas



Designed specifically for you to get your head down and concentrate away from the buzz of the rest of the school.

Outside courtyard



Our Brighton and Canterbury schools benefit from outside seating areas to relax or study.



Canterbury Student Lounge



Boston Classroom



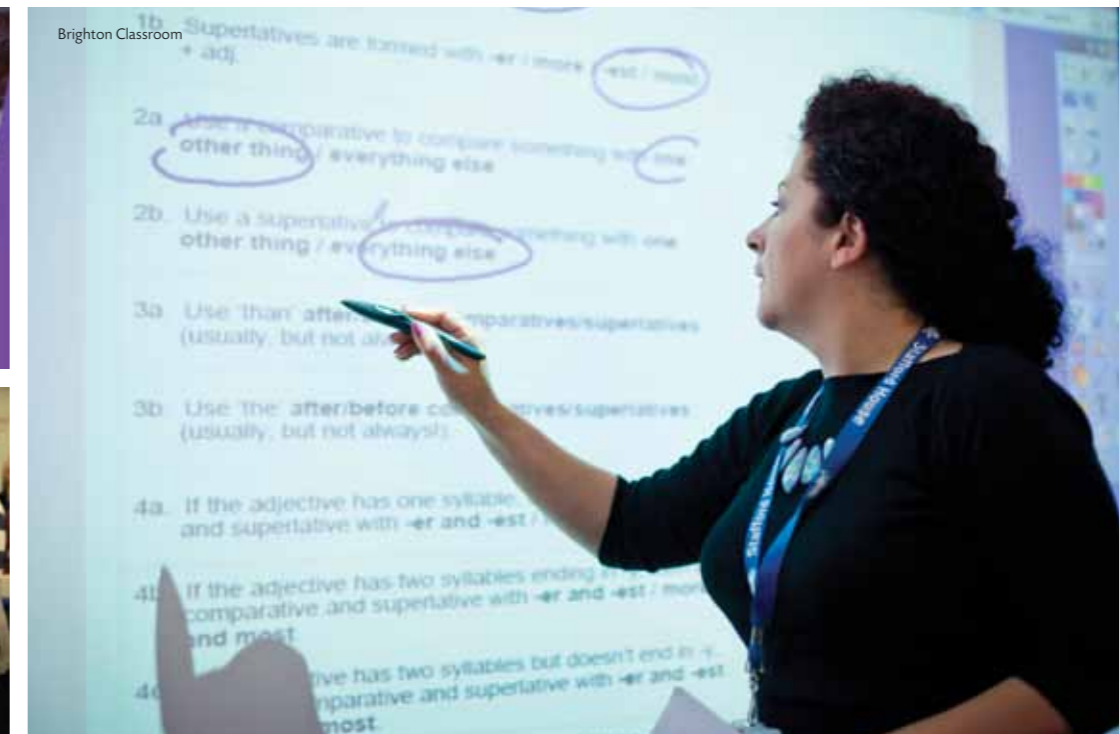
London Canteen



Brighton IT Suite



Boston IT Suite



Brighton Classroom



London Café



Brighton Student Lounge



London Library

Your progression route

Studying English at Stafford House will provide you with all the support necessary to reach your English language goals. Use our Progression Guide below, to map your potential journey to English language fluency. The table below is for guidance purposes only. Students' progression is dependent on motivation, a commitment to self-study and the use of English outside of the classroom.

			20 lessons per week	25 lessons per week	30 lessons per week
ADVANCED	7 PROFICIENCY Equivalent to: Cambridge CPE, IELTS 7.5–9.0, TOEFL iBT 106–120	You can use a range of language close to that of your own language. You have no problem understanding or communicating. You now wish to extend your vocabulary and explore the nuances of idiomatic English.	12-16 weeks	11-15 weeks	10-12 weeks
	6 ADVANCED Equivalent to: Cambridge CAE, IELTS 6.5–7.5, TOEFL iBT 86–105	You can express yourself clearly and effectively. You have a sound grasp of major tenses and grammatical structures. You read widely and can follow the majority of what is heard on TV, radio and film.	12-16 weeks	11-15 weeks	10-12 weeks
INTERMEDIATE	5 UPPER INTERMEDIATE Equivalent to: Cambridge FCE, IELTS 5.5–6.0, TOEFL iBT 66–85	You can communicate effectively in most situations, discussing and expressing opinions on a wide range of topics. You will continue to broaden your vocabulary to become more fluent and accurate.	12-22 weeks	12-20 weeks	12-18 weeks
	4 INTERMEDIATE Equivalent to: Cambridge PET, IELTS 4.5–5.0, TOEFL iBT 35–45	You are a confident speaker and understand much of what you read and hear. You have a reasonable vocabulary and can survive well in most situations. You now need to become more fluent and accurate, use more complex structures and sophisticated vocabulary.	12-22 weeks	12-20 weeks	12-18 weeks
ELEMENTARY	3 PRE-INTERMEDIATE Equivalent to: IELTS 4	You can communicate well in everyday social and travel situations and understand some of what is said. You are familiar with basic grammar but need to develop this further. You need to build your vocabulary and listening skills.	10-12 weeks	9-10 weeks	8 weeks
	2 ELEMENTARY Equivalent to: Cambridge KET, IELTS 3	You have a small, basic vocabulary and can communicate on a simple level. You can survive in everyday situations such as shopping, greeting and travelling. You make a lot of mistakes but people can understand you.	9 weeks	7-8 weeks	6 weeks
	1 BEGINNER	You only know a few words of English.	6 weeks	5 weeks	4 weeks

Flexible learning

Having the flexibility to change your study plan is as important as choosing the right school and at Stafford House you'll be able to do both. Adaptable study programmes, numerous locations and a straight forward pricing structure, allows you to be in control of your learning destiny.

A choice of locations

London, Brighton, Canterbury or Boston, four fantastic locations and all great places to study. Our flexible programmes mean you can easily transfer between any of our UK centres or choose to study in Boston, the education capital of the USA.

A choice of courses

Our eight courses follow the same simple pricing structure across our UK locations. If you arrive and decide you are on the wrong programme, it's simple to switch. As long as you continue with the same number of hours per week, it's often free too.

Flexible programmes

Our timetabling system offers a great deal of flexibility and choice. Many of our courses offer start dates every Monday for 50 weeks of the year. Plus, our range of 'modules', which change every 4 weeks, means that when you arrive, you can tailor your programme specifically for you.



Where you live

Where you live is key to your happiness and academic success. Whether you prefer the independence of a student residence or the familiarity of homestay, our accommodation options are chosen to offer you the flexibility of choice and quality you deserve.

Homestay*

One of our most popular accommodation options, homestay allows you to integrate into family life and practise your English language outside of the classroom, over dinner and throughout the weekend with your welcoming hosts. This is a unique way to live and study at your chosen destination.

*London homestay accommodation is provided by third party agencies.

Superior homestay

This option offers you all the benefits of homestay, but with the comfort and convenience of a personal bathroom and a higher standard of accommodation.

Residential accommodation

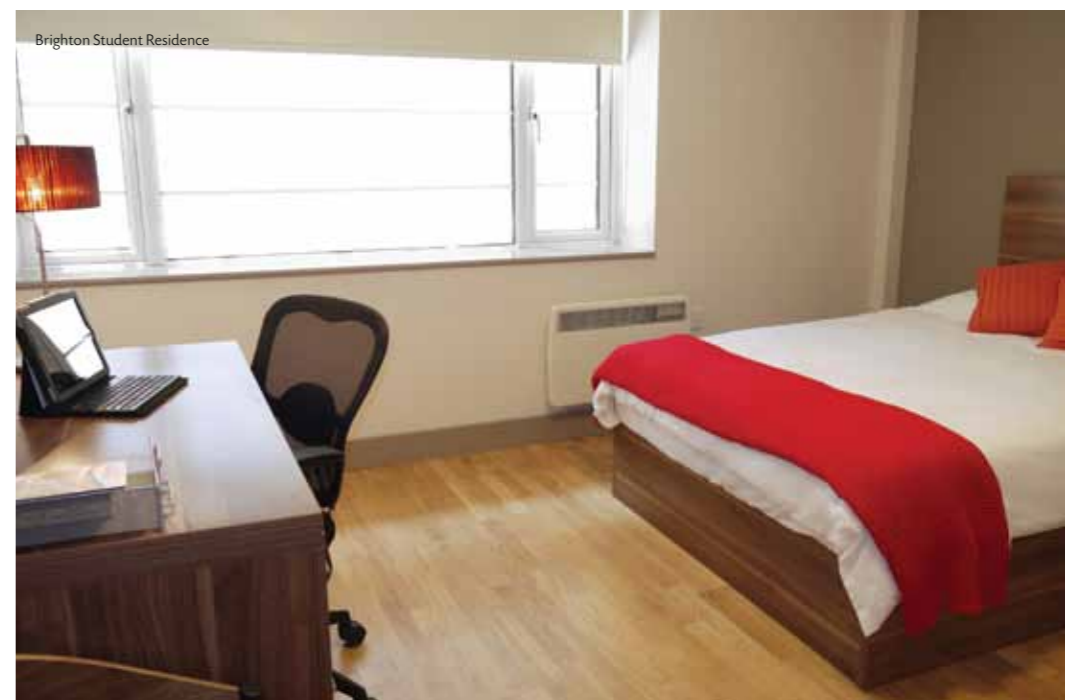
Offering you more space to yourself, our hand-picked student residences provide the chance to live more independently with like-minded people from all over the world. Residences are modern and often include 24 hour reception, laundry, bike storage, common room, and Wi-Fi internet access, conveniently located for easy access to school.

Student houses

Similar to a residence but offering more independence, you will live with other students but on a smaller scale than in a residence, allowing you to build lasting friendships with your house mates. Fully furnished and equipped for self-catering.

Private options

As all of our schools are in popular student cities, there is a wealth of private accommodation to rent, to suit all requirements and budgets. Our staff will be happy to help in any way.






Inspiring activities

With dedicated Activity Managers at every centre you will never be short of things to do in your spare time. We work year-round to keep you entertained.

Every centre is different but activities can include such things as:

- City walking tours
- Photography club
- Day trips outside of the city
- Football, basketball, beach volleyball and tennis
- Pub nights
- Games night
- Pizza and movie night
- Boat trip
- Museum and gallery visits
- Weekend trips to other cities
- Concerts

 Why not follow what we have been doing on facebook.
[facebook.com/StaffordHouseSchoolofEnglish](https://www.facebook.com/StaffordHouseSchoolofEnglish)



Hello students

Stafford House students come from all over the world, here are just a few commenting on their experience with us.



"I really enjoyed studying at Stafford House School of English. I met a lot of new people from many different countries, learning lots about their cultures as I had to speak in English to make friends.

The school is so beautiful - an old building but with great facilities - library, a computer room, Wi-Fi access - and very polite staff that help you every time you need it. Also because we studied in smaller classes it meant the teacher was able to follow and help every one of us."

Ludovica Croce
Italian
Stafford House London



"We have a good mixture of content in our morning class, such as speaking, listening, writing and reading. Everyone has the chance to express and to bring new ideas. Our teacher listens to everyone and arranges the lesson so that it is beneficial to all. I feel very confident in my improvement.

Outside of class the range of activities is wide and the local tour was awesome."

Srikanth Sriskandarajah
Swiss
Stafford House London



"It is a great location, because after class you can just cross the street and go do something in downtown. It's a great environment for learning, you have the possibility to see native Bostonians living and working, Boston is a very comfortable city. I live in homestay with other students, we all go out to eat together - the students and the family - we travel to school on the subway together and often do our activities after school together."

Johanne Okomo Ekeka
Gabonese
Stafford House Boston



"I enjoyed all things about Stafford House. We have lots of activities and get to choose from many different options. Pub nights, museums, cinema days, pool competition. Every weekend we have a journey to another city - Cambridge, Oxford, London and Brighton - they are really unforgettable memories for us.

I feel that I really improved my English at Stafford House - of course my main aim! Before I came here I didn't trust my speaking and it was really hard to understand the English accent but now I can speak fluently and understand everything."

Seren Sonmez
Turkish
Stafford House Canterbury



"There was so much to enjoy about studying here - the teachers and people who work here who are really fun, there are a lot of activities - skiing was my favourite. Our teachers are very good at knowing exactly where we needed to grow, in what areas we might have doubts or specific questions and in getting us to speak in English without realising we were speaking. The location here in Boston is perfect because you can go anywhere as you're right in the centre of the city."

Carolina Mendez
Colombian
Stafford House Boston



"Brighton is like a paradise for me. Very easy to move around the city and easy to reach London and other places when you want to because of the transport links. I found it very easy to make friends, I'm an outgoing person so I like talking but we go out all the afternoon and in the evening together, or have lunch in a group. You can meet people everywhere and talk with anyone, Brighton is a friendly city."

Vittoria Gatti
Italian
Stafford House Brighton

hello LONDON

Stafford House London is located right in the heart of Central London close to the West End, Covent Garden and Oxford Street.

Tower Bridge
from London Bridge



Learn in the heart of the world's most exciting city.

The school is located in the heart of upmarket Bloomsbury, central London, with all the transport links to the rest of the capital you could ever need at your feet.

Our historic buildings are full of character, light-filled and packed with the latest technology. Situated in between some of the world's top universities, you'll also find all the academic inspiration you need around you.



Key Facts

London Population
8,714,000

Nickname
The Big Smoke or The City

Top 5 sights not to miss

- The London Eye
- Buckingham Palace
- Big Ben
- Tower of London
- British Museum

Closest Tube

Holborn



"I met a lot of great people at Stafford House, and made good friends who I will stay in touch with when I leave. All of our teachers and staff are kind and helpful and I felt really prepared going into my IELTS exam." **Bernado Biscaretti**

Key School Facts

Capacity 350
Classrooms 20
Student computers 14
Students in class
Average 11 (max.14)

Top 10 Nationalities*

- Korean
- Turkish
- Swiss
- Brazilian
- Italian
- Thai
- Chinese
- Saudi Arabian
- Japanese
- Colombian

* Based on student weeks 1st September 2013 to August 31st 2014.

London Amenities

- Student lounge
- IT lounge
- Free Wi-Fi throughout
- Library
- Café
- Canteen
- Interactive whiteboards
- Self-study room
- Watch our school video staffordhouse.com/london

Accommodation Options

- Homestay
- Student House
- Student Residence
- Summer Residence

hello BRIGHTON

Stafford House Brighton is as close to the seafront as you can get whilst only being a short walk from the Lanes and the trendy boutique shops Brighton is renowned for.



Brighton Pier
from Brighton Beach



Study in the south coast's coolest seaside town.

With the beach in one direction and town the other, the school is located in the heart of the action. Situated in a beautiful Regency building, for which Brighton is famous, our light, bright classrooms and bespoke student zones offer the perfect combination of study, fun and socialising space!



Key Facts

Brighton and Hove population 276,000

Nickname London-on-Sea

Distance from London 55 minutes by train

Top 5 sights not to miss

- Brighton Pier
- Brighton Pavilion
- The Lanes
- Brighton Wheel
- Brighton Marina

Closest Rail Station

Hove or Brighton



"I fell in love with Brighton, it's a big city with lots of things to do, places to visit, shops and the beach to relax and sunbathe on but at the same time it's not as busy as London. I found it really easy to get around and took the opportunity to explore other parts of England as well." **Giorgia Tonani**

Key School Facts

Capacity 224
Classrooms 16
Student computers 14
Students in class Average 10 (max.14)

Top 10 Nationalities*

- Saudi Arabian
- Turkish
- Thai
- Swiss
- Chinese
- Kazakh
- Korean
- Japanese
- Italian
- French

* Based on student weeks 1st September 2013 to August 31st 2014

Brighton School Amenities

- Student lounge
- IT lounge
- Free Wi-Fi throughout
- Library
- Outside courtyard
- Interactive whiteboards
- Self-study room
- Watch our school video staffordhouse.com/brighton

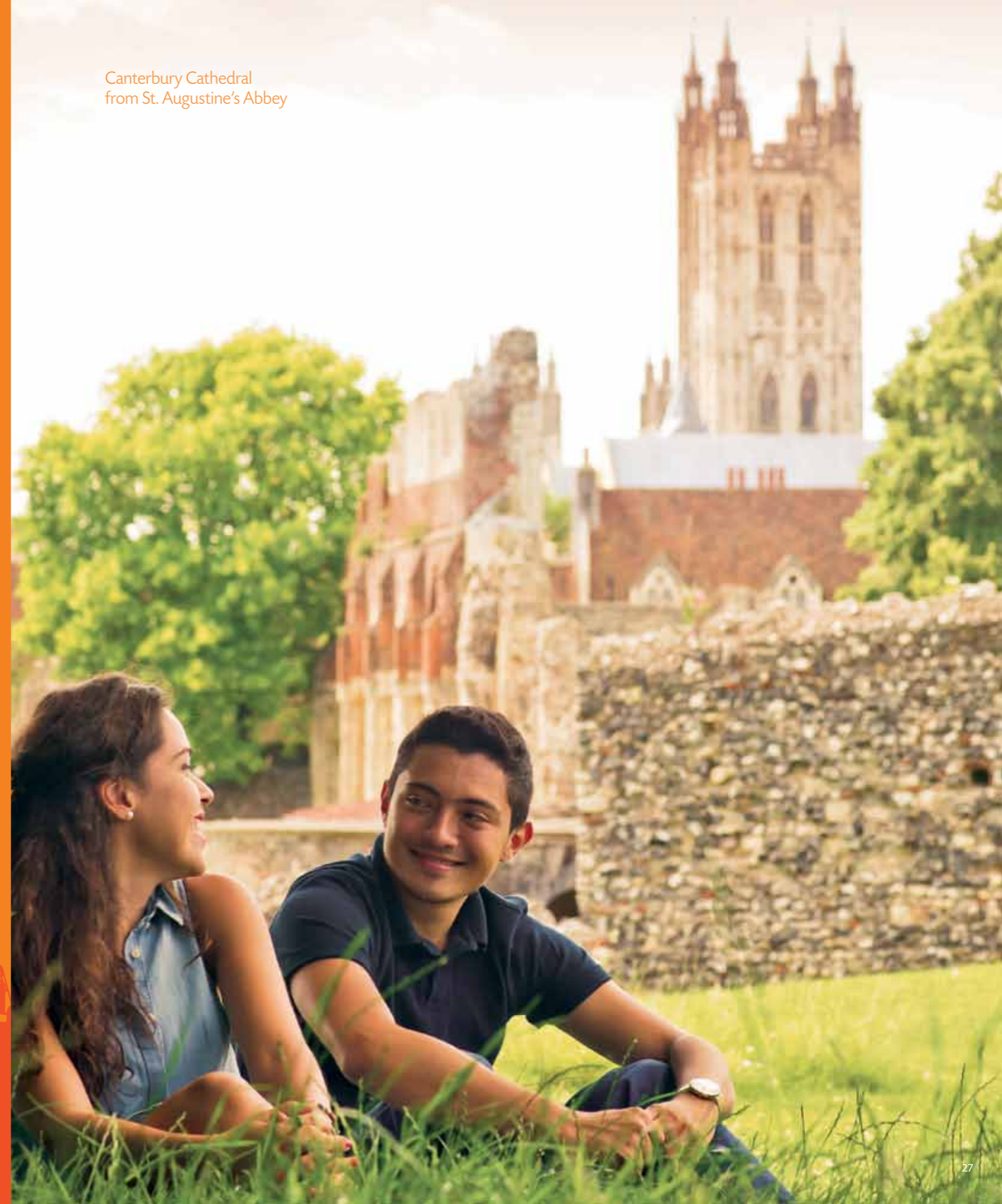
Accommodation Options

- Homestay
- Student House
- Student Residence
- Summer Residence

hello CANTERBURY

Stafford House Canterbury is situated in the heart of the beautiful Kent countryside lovingly known as the Garden of England.

Canterbury Cathedral
from St. Augustine's Abbey



The traditional English experience.

Canterbury Cathedral, cream teas and river punting - if you are looking for that traditional English experience then look no further than Stafford House Canterbury. Our light, bright school is just moments from the centre of this medieval city, awash with history yet vibrant with student life from the three popular universities that also reside here.



“The program of activities is really good at the school. For example, weekend trips I’ve been on include Brighton, Cambridge and Oxford and during the week I enjoy the pub night and the historical tours through Canterbury.” **Peter Steiner**

Key School Facts

Capacity 180
Classrooms 15
Student computers 14
Students in class
Average 10 (max.14)

Top 10 Nationalities*

- Saudi Arabian
- Thai
- Korean
- Turkish
- Kuwaiti
- Chinese
- Colombian
- Russian
- Swiss
- Italian

* Based on student weeks 1st September 2013 to August 31st 2014

Canterbury School Amenities

- Student lounge
- IT lounge
- Free Wi-Fi throughout
- Library
- Café
- Outside courtyard
- Interactive whiteboards
- Self-study room
- Watch our school video staffordhouse.com/canterbury

Accommodation Options

- Homestay
- Student House
- Summer Residence

Key Facts

Canterbury population 44,000
Nickname The Cathedral City
Distance from London 55 minutes by train

Top 5 sights not to miss

- Canterbury Cathedral
- St Augustine's Abbey
- Trips on the river
- Dover Castle
- Paris by Eurostar

Closest Rail Station

Canterbury West or Canterbury East

Hello BOSTON

Stafford House Boston is right on the doorstep of Boston Common and the Freedom Trail, home of the American Revolution.

Downtown Boston



Study in the education capital of the USA.

Over 250,000 students from all over the world help give Boston this title and with Harvard and MIT close by it's easy to see why. Our central downtown school is just moments from the green space of Boston Common, historic Faneuil Hall Marketplace and even Macy's which is over the road. Our ultra-modern school includes all the facilities you need for that all American adventure.



"I like the creative atmosphere here, you can travel around the world through your classes. Every day there is an activity - I have been to almost all of them! Your teacher here is your friend and studying is not boring as we have a balance between entertainment and education." **Abdulmajeed Alsulemani**

Key School Facts

Capacity 250
 Classrooms 18
 Student computers 21
 Students in class
 Average 11 (max.15)

Top 10 Nationalities*

Saudi Arabian

Brazilian

Colombian

Italian

Chinese

Thai

Spanish

Mexican

Turkish

Venezuelan

* Based on student weeks 1st September 2013 to August 31st 2014

Boston School Amenities

- Student lounge
- IT lounge
- Free Wi-Fi throughout
- Interactive whiteboards
- Watch our school video staffordhouse.com/boston

Accommodation Options

- Homestay
- Student House
- Student Residence
- Summer Residence

Key Facts

Boston population
625,087

Nickname
The Walking City

Distance from New York
3½ hours

Top 5 sights not to miss

- The Freedom Trail
- Fenway Park (home of the Boston Red Sox)
- Harvard University
- Boston Common
- Whale watching



Choose your course

From General English to Exam Preparation, choose the course that's right for you.

General English

We offer an exciting range of General English courses for all levels, from beginner to proficiency, and to suit different budgets. We also offer timetables that give you the flexibility to choose a course that best suits your needs from 1-36+ weeks.

Course	Hours/Lessons per week	Start dates	Modules	Notes
Standard English (UK) Standard English (USA)	16.7/20 15/20	Any Monday		
Standard FLEX NEW Course	16.7/20	Any Monday		NEW for 2015 AM or PM classes London and Brighton only
Intensive English (UK) Intensive English (USA)	21/25 18.75/25	Any Monday	5 module lessons per week	
Super Intensive English (UK) Super Intensive English (USA)	25/30 22.5/30	Any Monday	10 module lessons per week	

Flexibility

From Standard to Intensive or Super Intensive, our range of English language courses offers you a choice on how intensively you want to study whether that's 20 lessons a week on a Standard course or 30 lessons a week on our Super Intensive. Plus with our range of modules you get to personalise your course totally to fit your needs.

How you learn

We believe that you will learn faster and more effectively if your lessons are engaging, fun and relevant, that's why our teachers use a range of techniques and develop classes that are motivating and build your confidence. This will allow time to focus on any areas of weakness.

Any weekly programme is influenced not only by the course book syllabus but also by the learning goals and interests of the students in any one group.

Testing on arrival

On your first day you will take a language assessment, to assess your knowledge of grammar and vocabulary and how well you are able to understand and speak English. This helps us to understand the class you'll be happiest and most successful in.

Monthly Tutorials

Every month you'll have a one-to-one tutorial with a senior member of the academic team to make sure you are on track to achieve your goals and fulfil your potential. It's a great opportunity to review your course choices and learning methods and to really make sure you achieve what you want to achieve.

Quality Assurance

Our Directors of Studies are based in all of our schools to ensure our programmes are of the highest possible quality, our class sizes are small and that our students leave having gained the maximum from their time with us.

Module Options

All students on our Intensive and Super Intensive courses can personalise their learning through the addition of specific modules. These modules allow students to study topics that best fit with their learning goals. Below are just a few for you to think about:

News and Newspapers

Explore different types of printed media and discuss the raised issues of current affairs incorporating useful language and vocabulary at Upper-Intermediate - Advanced level trying to help students learn and develop reading and critical thinking skills now to help them become informed, involved in the future.

Skills: reading, speaking, listening

How to Win Friends and Influence People

A study in register, form, and audience. This module is a business inspired look at communication. As necessary, it will address the business English needs around networking, correspondence, socializing, meetings, etc. according to student need. It is also very much for non-BE students ready to examine the effect their language has on their interlocutor.

Pre-IELTS: Grammar

A scintillating taste of grammar in the context of the IELTS exam. This could entail any part of the exam and will focus on the variety of grammatical knowledge necessary to achieve top marks.

Global Issues

A mid-level offering for students to improve their speaking skills particularly when it comes to expressing opinion, agreeing & disagreeing, exercising diplomacy and politeness, and being able to talk about subject that are important to them.

Skills: speaking, listening

Language for Storytelling

Discover how tenses are used with other tenses, combine them, distil them – practice using different tenses appropriately to improve accuracy and getting your point across with precision.

Skills: reading/listening, speaking, note-taking and extensive writing

Pronunciation Clinic

Isolated sounds, intonation, stressed syllables, sentence stress. Speaking and listening activities to help the students identify the differences between students' first language and English and offer opportunities to practice.

Skills guide listening, pronunciation and speaking.

UK Sample Timetable

	9:00 - 9:50	9:50 - 10:40		11:00 - 11:50	11:50 - 12:40										
Standard	Core Course	Core Course	BREAK	Core Course	Core Course	BREAK									
Standard FLEX								14:30 - 15:20	15:20 - 16:10		16:30 - 17:20	17:20 - 18:10			
Intensive	Core Course	Core Course			Core Course		Core Course		Core Course	Core Course					
Super Intensive	Core Course	Core Course			Core Course		Core Course		Core Course	Core Course					

All lessons are 50 minutes long. Timetables given are subject to change and may vary by centre. For an up to date timetable for your centre visit staffordhouse.com

USA Sample Timetable

	9:00 - 9:45	9:45 - 10:30		10:45 - 11:30	11:30 - 12:15									
Standard	Core Course	Core Course	BREAK	Core Course	Core Course	BREAK								
Intensive	Core Course	Core Course			Core Course		Core Course		12:30 - 13:15					
Super Intensive	Core Course	Core Course			Core Course		Core Course		12:30 - 13:15					14:00 - 15:15
									Module					Module

All lessons are 45 minutes long. Timetables given are subject to change. For an up to date timetable for your centre visit staffordhouse.com

Exam Preparation

All our exam preparation courses cover the areas of your chosen exam in detail ensuring you learn the skills and English language through the use of past papers and exam technique to achieve exam success. Preparation courses available for Cambridge Exams, IELTS, and TOEFL.

Objectives

- Goal-oriented and highly focussed preparation programme
- Develop the skills needed to succeed in the exam
- Develop strategies to maximise your score in the exam

How you will learn

- Skim reading for meaning, scanning for detail, paraphrasing, making inferences, and more
- Methods and strategies for successful integrated and independent writing
- The skills needed to speak confidently and succeed in a one-to-one interview
- Listening strategies such as listening for gist and for detail
- With sample papers and continuous practice of specific tasks, you will become familiar with the exam you are taking and learn how to answer the questions as effectively as possible.

IELTS Preparation

These courses will develop your English skills and improve your exam technique in preparation for the IELTS (International English Language Testing System) exam – ideal for students who are requiring a specific level of IELTS for university entrance or a specific level by a certain date.

- Full-time, Intensive and Super Intensive
- Start dates – any Monday, 1-36+ weeks
- Level: Intermediate to Proficiency
- Lessons per week: 25 lessons (21 hours), 30 lessons (25 hours)
- Age 16+

QUICK FACTS

Start dates Any Monday, 1-36+ weeks

Level Intermediate to Proficiency

Lessons per week 25 lessons (21 hours), 30 lessons (25 hours)

Age 16+

Location UK Centres

TOEFL Preparation

Taken by over 25 million English language learners, the TOEFL test is a widely respected English language test. It measures your ability to use English at university level and is recognised by over 8,000 institutions in more than 130 countries, including the majority of North American universities.

QUICK FACTS

Start dates Every Monday

Level Beginner to Proficiency

Location USA

Cambridge Exam Preparation

Cambridge English exams are recognised by schools, universities and employers worldwide, they do not expire and there are three to choose from.

FCE

This course prepares you for Cambridge English: First (FCE), also known as the First Certificate in English, which proves you can use every day written and spoken English for work or study purposes. The programme will develop every aspect of your English through engaging lessons and activities, from studying idioms and modal verbs to debating ideas and writing essays at a high language level.

It will enable you to developing the skills and language required to successfully complete the B2 (Upper Intermediate) level of English.

CAE

This course prepares you for Cambridge English: Advanced (CAE), which demonstrates that you have the high-level English needed for academic and professional success. As you prepare for the exam, you'll study complex grammar and advanced-level vocabulary and learn how to write proposals, conduct research and communicate effectively in an international workplace.

It will enable you to develop the skills and language required to successfully complete the C1 (Advanced) level of English.

CPE

This course prepares you for Cambridge English: Proficiency (CPE), which demonstrates that you have the advanced skills necessary to function effectively in almost every English speaking context. As you prepare for the exam, you'll need to be prepared to think intensively about the English language in a variety of professional and academic contexts, transposing your thoughts into different registers of language looking for the most suitable phrasing for each situation. The course has a heavy reliance on texts and candidates must be prepared to read widely and deeply outside the class to master the 20,000 lexical items needed to succeed in the exam.

QUICK FACTS

Start dates January, March, September

Level Upper Intermediate to Proficiency

Lessons per week 25 lessons (21 hours), 30 lessons (25 hours)

Age 16+

Location UK Centres



Business English

This course will develop your English skills and confidence for a variety of business contexts such as presentations, meetings and negotiations. The syllabus combines practical skills with business and industry-specific language tailored to your needs so you make the right impact with your future clients and colleagues.

How you learn

Your English language fluency will improve as you study business vocabulary, grammar and pronunciation relating to a range of topics that include sales, marketing and advertising, human resources, administration, finance and management.

Your language and practical skills will grow through various activities such as reading correspondence and reports, writing letters and emails, negotiating, preparing and delivering presentations and socialising and networking.

Key Features

- Full-time, Intensive or Super-Intensive course with specialist modules introducing functional business vocabulary for applied use in the workplace
- Develops the listening, speaking, reading and writing skills needed in the commercial world
- Improves grammar and extends business vocabulary

QUICK FACTS

Start dates Every Monday, 1-11 weeks

Level Intermediate to Proficiency

Lessons per week 25 lessons (21 hours) or 30 lessons (25 hours)

Age 18+

London only

One-to-One English

Our One-to-One English courses can be completely tailor made according to your needs and objectives. This course is particularly useful for students who have a very particular need or for students who wish to learn very intensively. It is ideal for students who wish to take the premium route to English success through personalised one-to-one tuition.

Course content tailored to your needs- highly personalised tuition to help you succeed in your goals. Working with your own personal teacher, you will identify the specific language areas and skills that you wish to improve and together create your own special programme of learning.

Our teachers will provide suitable materials for the focus you have chosen.

Key Features

- Can be added to ANY course, or as a stand-alone programme
- Develops listening, speaking, reading and writing skills
- Improves grammar and extends vocabulary
- Greater flexibility to pursue preferred interests and focus

QUICK FACTS

Start dates Every Monday

Level Beginner to Proficiency

Lessons per week Minimum booking 5 lessons (UK) and 25 lessons (USA)

Age 16+

UK Lessons are 50 minutes long

USA Lessons are 45 minutes long

Adult Groups

Our schools are open for 50 weeks of the year. Stafford House is a specialist in providing bespoke group services. We offer a complete package that can be adapted to your needs

Ideal for groups of students who wish to improve their language skills in a particular field of interest. In the past, we have run courses for a wide range of students, including teachers, tourism industry professionals,

soldiers, agriculture students and groups of students seeking a course of cultural interest.

High school groups and groups of students preparing for exams can also request a programme focussed on preparation or revision of particular areas of interest.

The content of the classes and visits can be discussed in advance to make a programme that is just right for you.

For adult groups of students who wish to follow the courses detailed earlier in this brochure, we can organise to integrate a group of students for some of, or their entire programme.

Courses for Juniors



Stafford House Study Holidays provides high quality English and activity courses for young learners. We enjoy a reputation for providing effective language lessons and running well-organised activities and excursions, in safe and friendly environments through the UK and USA.

We give equal importance to both the academic and leisure parts of the programme and encourage students to use the English language rather than to 'learn about it'. For more information on our centres, as well as further information on the courses available, please visit www.studyholidays.com

Classic Course

This summer programme is one of a number of courses we run throughout the UK and USA. It offers a lively combination of English language lessons, activities and excursions.

Available in

Centres across the UK and USA

Start dates

Weekly between June - September

Level

Elementary to Advanced

Lessons per week

20 (15 hours)

Maximum class size

16 students

Course length

1 - 4 weeks

Age

9 - 18 years (depending on centre)

These centres offer a range of academic, creative and language programmes which are all accredited by the respective bodies and associations.

Email studyholidays@staffordhouse.com

Year-round Junior Courses

Bespoke courses for Junior Groups can be arranged in Canterbury, Brighton, London in the UK and Boston, Fort Lauderdale and San Diego in the USA throughout the year.

Other courses available include:

General English courses

- Intensive English
- London Explorer

Specialist courses

- Art & Design
- Drama
- Arsenal Soccer School

Specialist sports supplements are also available in certain centres

- Tennis
- Football
- Rugby
- Golf
- Horse Riding
- Art
- Basketball

www.staffordhouse.com/boston

PLACE
STAMP
HERE

POST CARD

www.staffordhouse.com/brighton

PLACE
STAMP
HERE

POST CARD

www.staffordhouse.com/canterbury

PLACE
STAMP
HERE

POST CARD

www.staffordhouse.com/london

PLACE
STAMP
HERE

POST CARD



hello FUTURE

Enquiries and Admissions

Kett House,
Station Road
Cambridge CB1 2JH
United Kingdom

T +44 (0) 1223 447707
F +44 (0) 1223 346181
E soe@staffordhouse.com

Our School Locations


London
Stafford House School of English
2 Southampton Place
London WC1A 2DA
UK

Brighton
Stafford House School of English
61 Western Road
Brighton & Hove BN3 1JD
UK

Canterbury
Stafford House School of English
19 New Dover Road
Canterbury CT1 3AS
UK

Boston
Stafford House School of English
38 Chauncy Street
8th Floor
Boston MA 02111
USA



English Courses in the UK accredited by the  BRITISH COUNCIL

Members of  ENGLISHUK member

Courses in the USA accredited by  ACCET  ENGLISH USA

Part of Cambridge Education Group.

We'd like to extend our thanks to all staff and students for taking part in this brochure.

